

ITEM #	Alternate	DESCRIPTION	RETAIL	EACH	24	ONLINE
--------	-----------	-------------	--------	------	----	--------

www.branchdist.com

BROTHER

FAX and LASER SUPPLIES

ITEM #	Alternate	DESCRIPTION	Yield	RETAIL	EACH	24	ONLINE
PC-201	R-PC201	Brother MFC-1770, PPF-1170/1270	print cartridge	450	32.99	26.39	25.09
■ PC-202RF	R-PC202RF	Brother MFC-1770, PPF-1170/1270	ribbon refills		Use PrintWerks R-PC202RF*		
■ PC-301	R-PC301	Brother PPF-750/870MC, MFC-970MC	print cartridge	250	25.99	19.84	18.86
■ PC302RF	R-PC302RF	Brother PPF-750/870MC, MFC-970MC	ribbon refills		Use PrintWerks R-PC302RF*		
■ PC-401	R-PC401	Brother Fax 560, 580MC, 660MC	print cartridge	150	23.49	18.90	17.96
■ PC-402RF	R-PC402RF	Brother Fax 560, 580MC, 660MC	ribbon refills		Use PrintWerks R-PC402RF*		
■ PC-501		Brother Fax 575	print cartridge	150	23.49	20.31	19.31
■ TN-250	R-TN250	Brother MFC-4800/6800, PPF-2800/2900	black toner	2200	37.99	30.09	28.60
■ TN-330	R-TN360	Brother HL-2140/2150, MFC-7320 std cap	black toner	1500	47.49	37.58	35.73
TN-350	R-TN350	Brother MFC-7220/7225/7240/7820	black toner	2500	65.99	53.64	50.99
TN-360	R-TN360	Brother HL-2140/2150, MFC-7320 hi-cap	black toner	2600	68.49	54.32	51.64
- TN-460	R-TN460	Brother HL-1030/1240, Fax 4750/8750	black toner	6000	95.49	75.25	71.53
■ TN-570	R-TN570	Brother HL-5140/5150/5170 series	black toner	6700	101.99	80.22	76.26
■ TN-580	R-TN580	Brother HL-5240/5250/5280 series	black toner	7000	104.99	84.44	80.27
■ TN-5000	R-TN250	Brother PPF-2550/3550, MFC-4450/6650	black toner		Use PrintWerks R-TN250 **		

* PrintWerks compatible thermal fax supplies, page 17

** PrintWerks compatible toner, page 18

INKJET SUPPLIES

ITEM #	Alternate	DESCRIPTION	Yield	RETAIL	EACH	24	ONLINE
LC-41Bk	R-LC41B	Brother MFC-210c, 420cn, 620cn	black	500	24.99	19.69	18.72
LC-41C	R-LC41C	Brother MFC-210c, 420cn, 620cn	cyan	400	13.99	10.83	10.30
LC-41M	R-LC41M	Brother MFC-210c, 420cn, 620cn	magenta	400	13.99	10.83	10.30
LC-41Y	R-LC41Y	Brother MFC-210c, 420cn, 620cn	yellow	400	13.99	10.83	10.30
LC-51Bk	R-LC51B	Brother DCP-130c, Fax 1860c, MFC-230c	black	500	24.49	19.69	18.72
LC-51C	R-LC51C	Brother DCP-130c, Fax 1860c, MFC-230c	cyan	400	13.49	10.92	10.38
LC-51M	R-LC51M	Brother DCP-130c, Fax 1860c, MFC-230c	magenta	400	13.49	10.92	10.38
LC-51Y	R-LC51Y	Brother DCP-130c, Fax 1860c, MFC-230c	yellow	400	13.49	10.92	10.38
LC-61Bk		Brother MFC-290c, 5490cn, 6490cw	black	450	24.49	19.69	18.72
LC-61C		Brother MFC-290c, 5490cn, 6490cw	cyan	375	10.49	8.35	7.94
LC-61M		Brother MFC-290c, 5490cn, 6490cw	magenta	375	10.49	8.35	7.94
LC-61Y		Brother MFC-290c, 5490cn, 6490cw	yellow	375	10.49	8.35	7.94
LC-65HYBk		Brother MFC-5890cn, 6490cw, 6890dw	black hi-yield	900	31.49	25.39	24.14
LC-65HYC		Brother MFC-5890cn, 6490cw, 6890dw	cyan hi-yield	750	16.99	13.39	12.73
LC-65HYM		Brother MFC-5890cn, 6490cw, 6890dw	magenta hi-yield	750	16.99	13.39	12.73
LC-65HY		Brother MFC-5890cn, 6490cw, 6890dw	yellow hi-yield	750	16.99	13.39	12.73

PrintWerks compatible inkjet cartridges, page 14 ... MACO inkjet labels, page 11

PrintWerks compatible toner, page 18

RIBBONS

1030	GRC T333	Brother AX/GX/SX series	correctable		8.49	4.16	3.95
------	----------	-------------------------	-------------	--	------	------	------

■ Non-stock item

800-228-6351

New Item ★

ITEM #	Alternate	DESCRIPTION	RETAIL	EACH	24	ONLINE	
www.branchdist.com							
CANON			PrintWerks compatible toner for CANON, page 18				
INKJET CARTRIDGES							
BCI-3eBk	RBCI3B	Canon BJC-3000/6000, S-400/450	black tank	15.99	14.31	13.98	
BCI-3eC	R-BCI3C	Canon BJC-3000/6000, S-400/450	cyan tank	12.99	11.42	11.15	
BCI-3eM	R-BCI3M	Canon BJC-3000/6000, S-400/450	magenta tank	12.99	11.42	11.15	
BCI-3eY	R-BCI3Y	Canon BJC-3000/6000, S-400/450	yellow tank	12.99	11.42	11.15	
BCI-6Bk	R-BCI6B	Canon S-800 ser, S-900, S-9000	black tank	13.99	12.36	12.07	
BCI-6C	R-BCI3C	Canon S-800 ser, S-900, S-9000	cyan tank	13.99	12.36	12.07	
■ BCI-6G		Canon i990/9900/9950 only	green tank	13.99	12.36	12.07	
BCI-6M	R-BCI3M	Canon S-800 ser, S-900, S-9000	magenta tank	13.99	12.36	12.07	
BCI-6PC		Canon S-800 ser, S-900, S-9000	photo cyan	13.99	12.36	12.07	
BCI-6PM		Canon S-800 ser, S-900, S-9000	photo magenta	13.99	12.36	12.07	
■ BCI-6R		Canon i990/9900/9950 only	red tank	13.99	12.36	12.07	
BCI-6Y	R-BCI3Y	Canon S-800 ser, S-900, S-9000	yellow tank	13.99	12.36	12.07	
BCI-15Bk		Canon i70	black tank	185 14.99	14.53	14.19	
BCI-15C		Canon i70	color tank	100 24.49	23.20	22.66	
BCI-16		Canon Pixma iP90	color tank	25.99	25.10	24.51	
BCI-21B	R-BCI21B	Canon BJC-2000/4000/5000 series	black tank	8.75	7.86	7.67	
BCI-21C	R-BCI21C	Canon BJC-2000/4000/5000 series	color tank	23.25	22.27	21.74	
BCI-24Bk	R-BCI21B	Canon S-200/300	black tank	7.49	6.72	6.56	
BCI-24C	R-BCI21C	Canon S-200/300	color tank	19.99	17.89	17.47	
CLI-8Bk	R-CLI8B	Canon iP4200/5200/6600, MP500/780/950	black tank	15.99	14.75	14.40	
CLI-8C	R-CLI8C	Canon iP4200/5200/6600, MP500/780/950	cyan tank	15.99	14.75	14.40	
CLI-8M	R-CLI8M	Canon iP4200/5200/6600, MP500/780/950	magenta tank	15.99	14.75	14.40	
CLI-8PC		Canon iP4200/5200/6600, MP500/780/950	photo cyan	15.99	14.75	14.40	
CLI-8PM		Canon iP4200/5200/6600, MP500/780/950	photo magenta	15.99	14.75	14.40	
CLI-8Y	R-CLI8Y	Canon iP4200/5200/6600, MP500/780/950	yellow tank	15.99	14.75	14.40	
CL-31	R-CL51	Canon Pixma iP1800, MP140/210/470	color	205 20.99	19.07	18.62	
CL-41	R-CL51	Canon Pixma iP1600, MP170	color	308 26.99	25.23	24.64	
CL-51	R-CL51	Canon Pixma iP6210D, MP160/180	color high-cap	545 41.99	40.16	39.21	
CL-52		Canon Pixma iP6210D, MP450	photo color	29.99	28.84	28.16	
CL-211		Canon Pixma ML240/480	color	20.99	19.77	19.31	
CL-211XL		Canon Pixma ML240/480	color high-cap	26.99	25.17	24.58	
CLI-221Bk		Canon Pixma iP3600/4600	black tank	12.99	12.37	12.08	★
CLI-221C		Canon Pixma iP3600/4600	cyan tank	12.99	12.37	12.08	★
CLI-221G		Canon Pixma iP3600/4600	gray tank	12.99	12.37	12.08	★
CLI-221M		Canon Pixma iP3600/4600	magenta tank	12.99	12.37	12.08	★
CLI-221Y		Canon Pixma iP3600/4600	yellow tank	12.99	12.37	12.08	★
CLI-226Bk		Canon Pixma iP4820, MG5120/6120	black tank	15.30	12.90	12.60	★
CLI-226C		Canon Pixma iP4820, MG5120/6120	cyan tank	15.30	12.90	12.60	★
CLI-226G		Canon Pixma iP4820, MG5120/6120	gray tank	15.30	12.90	12.60	★
CLI-226M		Canon Pixma iP4820, MG5120/6120	magenta tank	15.30	12.90	12.60	★
CLI-226Y		Canon Pixma iP4820, MG5120/6120	yellow tank	15.30	12.90	12.60	★
PG-30	R-PG50	Canon Pixma iP1800, MP140/210/470	black	220 16.99	15.46	15.09	
PG-40	R-PG50	Canon Pixma iP1600, MP170	black	490 22.99	21.28	20.78	
PG-50	R-PG50	Canon Pixma MP150/160/180, MP450	black high-cap	750 37.99	36.77	35.91	
PG-210		Canon Pixma ML240/480	black	15.99	15.06	14.71	

ITEM #	Alternate	DESCRIPTION	RETAIL	EACH	24	ONLINE
--------	-----------	-------------	--------	------	----	--------

www.branchdist.com

CANON

INKJET CARTRIDGES (continued)

PG-210XL		Canon Pixma ML240/480	black high-cap	21.99	20.86	20.36
PGI-5Bk	R-PGI5B	Canon iP4200/5200/6600, MP500/780/950	pigment black	18.49	17.18	16.78
PGI-220		Canon Pixma iP3600/4600	pigment black	14.99	14.28	13.94
PGI-225		Canon Pixma iP4820, MG5120/6120	pigment black	17.49	14.75	14.40

PrintWerks compatible inkjet cartridges, page 14 ... MACO inkjet labels, page 11

PrintWerks compatible toner, page 18

EPSON

INKJET CARTRIDGES

S187093	R-S187	Epson Stylus Color 400/440/600/640	black	370	24.99	21.22	20.47
S189108	R-S189	Epson Stylus Color 740/760/800/850	black	300	30.99	24.15	23.29
S191089	R-S191	Epson Stylus Color 400/440/600/640	color	300	30.99	24.15	23.29
S193110		Epson Stylus Color Photo, Photo EX, 700	color	200	20.99	17.28	16.67
T007201		Epson Stylus Color 870/875DC	black	370	25.99	21.33	20.58
T008201		Epson Stylus Color 870/875DC	color	220	20.99	17.38	16.76
■ T009201		Epson Stylus Photo 1270/1280	color	330	30.99	25.66	24.75
■ T013201	R-S187	Epson Stylus Color 480SX/480SXU/580	black	320	18.99	15.84	15.28
T017201		Epson Stylus Color 770/777	black	190	30.99	25.80	24.89
T018201		Epson Stylus Color 770/777	color	150	25.99	21.59	20.82
T019201	R-S189	Epson Stylus Color 880/880i	black	190	30.99	25.80	24.89
■ T020201	R-S191	Epson Stylus Color 880/880i	color	150	25.99	21.59	20.82
T026201	R-T026	Epson Stylus Photo 810/820	black	500	27.99	23.24	22.42
■ T027201	R-T027	Epson Stylus Photo 810/820	color	200	23.99	20.05	19.34
T028201	R-T028	Epson Stylus C60, C61	black	600	30.99	25.80	24.89
T029201	R-T029	Epson Stylus C60, C61	color	300	30.99	25.80	24.89
■ T036120	R-T036	Epson Stylus C42+, C42UX, C44	black	330	18.99	15.84	15.28
■ T037020	R-T037	Epson Stylus C42+, C42UX, C44	color	180	22.99	19.16	18.48
T040120	R-T028	Epson Stylus C62UX, CX3200	black	600	30.99	25.66	24.75
T041020	R-T029	Epson Stylus C62UX, CX3200	color	300	30.99	25.80	24.89
T043120		Epson Stylus C84/86 only	black high-cap	950	35.99	30.01	28.95
T044120	R-T0441	Epson Stylus C64/84/86, CX6400/6600	black	400	25.99	21.72	20.95
T044220	R-T0442	Epson Stylus C64/84/86, CX6400/6600	cyan	400	13.99	11.76	11.34
T044320	R-T0443	Epson Stylus C64/84/86, CX6400/6600	magenta	400	13.99	11.76	11.34
T044420	R-T0444	Epson Stylus C64/84/86, CX6400/6600	yellow	400	13.99	11.76	11.34
T048120	R-T0481	Epson Stylus Photo R300, RX500	black	630	18.99	16.22	15.65
T048220	R-T0482	Epson Stylus Photo R300, RX500	cyan	430	13.99	11.76	11.34
T048320	R-T0483	Epson Stylus Photo R300, RX500	magenta	430	13.99	11.76	11.34
T048420	R-T0484	Epson Stylus Photo R300, RX500	yellow	430	13.99	11.76	11.34
T048520	R-T0485	Epson Stylus Photo R300, RX500	light cyan	430	13.99	11.76	11.34
T048620	R-T0486	Epson Stylus Photo R300, RX500	light magenta	430	13.99	11.76	11.34
T054120		Epson Stylus Photo R800, R1800	black	400	14.99	13.29	12.82
■ T054220		Epson Stylus Photo R800, R1800	cyan	400	14.99	13.29	12.82

ITEM #	Alternate	DESCRIPTION	RETAIL	EACH	24	ONLINE
--------	-----------	-------------	--------	------	----	--------

www.branchdist.com

EPSON

INKJET CARTRIDGES (continued)

■ T054320		Epson Stylus Photo R800, R1800	magenta	400	14.99	13.29	12.82	
■ T054420		Epson Stylus Photo R800, R1800	yellow	400	14.99	13.29	12.82	
■ T054720		Epson Stylus Photo R800, R1800	red	400	14.99	13.29	12.82	
■ T054820		Epson Stylus Photo R800, R1800	matte black	400	14.99	13.29	12.82	
■ T054920		Epson Stylus Photo R800, R1800	blue	400	14.99	13.29	12.82	
T060120	R-T0601	Epson Stylus C68/88, CX3800/4800/5900	black	400	20.99	17.50	16.88	
T060220	R-T0602	Epson Stylus C68/88, CX3800/4800/5900	cyan	600	13.99	11.76	11.34	
T060320	R-T0603	Epson Stylus C68/88, CX3800/4800/5900	magenta	600	13.99	11.76	11.34	
T060420	R-T0604	Epson Stylus C68/88, CX3800/4800/5900	yellow	600	13.99	11.76	11.34	
T068120-D2		Epson Stylus C120 - Twinpack	black x 2	620x2	39.99	38.59	37.22	
T069120	R-T0691	Epson Stylus CX5000/6000/7000F	black	245	18.99	15.21	14.67	
T069220	R-T0692	Epson Stylus CX5000/6000/7000F	cyan	335	14.99	11.62	11.21	
T069320	R-T0693	Epson Stylus CX5000/6000/7000F	magenta	335	14.99	11.62	11.21	
T069420	R-T0694	Epson Stylus CX5000/6000/7000F	yellow	335	14.99	11.62	11.21	
T078120		Epson Stylus Photo R260/380, RX580	black	300	18.99	15.21	14.67	
T078220		Epson Stylus Photo R260/380, RX580	cyan	515	14.99	11.62	11.21	
T078320		Epson Stylus Photo R260/380, RX580	magenta	515	14.99	11.62	11.21	
T078420		Epson Stylus Photo R260/380, RX580	yellow	515	14.99	11.62	11.21	
T078520		Epson Stylus Photo R260/380, RX580	light cyan	515	15.49	11.62	11.21	
T078620		Epson Stylus Photo R260/380, RX580	light magenta	515	15.49	11.62	11.21	
■ T079120		Epson Stylus Photo 1400, PX710W	black		19.99	17.79	17.16	★
■ T079220		Epson Stylus Photo 1400, PX710W	cyan		19.99	17.79	17.16	★
■ T079320		Epson Stylus Photo 1400, PX710W	magenta		19.99	17.79	17.16	★
■ T079420		Epson Stylus Photo 1400, PX710W	yellow		19.99	17.79	17.16	★
■ T079520		Epson Stylus Photo 1400, PX710W	light cyan		19.99	17.79	17.16	★
■ T079620		Epson Stylus Photo 1400, PX710W	light magenta		19.99	17.79	17.16	★
■ T087020		Epson Stylus Photo R1900	gloss optimizer		13.99	12.52	12.08	★
■ T087120		Epson Stylus Photo R1900	black		13.99	12.52	12.08	★
■ T087220		Epson Stylus Photo R1900	cyan		13.99	12.52	12.08	★
■ T087320		Epson Stylus Photo R1900	magenta		13.99	12.52	12.08	★
■ T087420		Epson Stylus Photo R1900	yellow		13.99	12.52	12.08	★
■ T087720		Epson Stylus Photo R1900	red		13.99	12.52	12.08	★
■ T087820		Epson Stylus Photo R1900	matte black		13.99	12.52	12.08	★
■ T087920		Epson Stylus Photo R1900	orange		13.99	12.52	12.08	★
T088120		Epson Stylus CX4400/4450/7400	black		12.99	11.62	11.21	
T088220		Epson Stylus CX4400/4450/7400	cyan		9.99	8.05	7.76	
T088320		Epson Stylus CX4400/4450/7400	magenta		9.99	8.05	7.76	
T088420		Epson Stylus CX4400/4450/7400	yellow		9.99	8.05	7.76	
T098120		Epson Artisan 700/800 series	hi-cap black		17.99	17.09	16.48	★
T099220		Epson Artisan 700/800 series	cyan		10.99	10.44	10.07	★
T099320		Epson Artisan 700/800 series	magenta		10.99	10.44	10.07	★
T099420		Epson Artisan 700/800 series	yellow		10.99	10.44	10.07	★
T099520		Epson Artisan 700/800 series	light cyan		10.99	10.44	10.07	★
T099620		Epson Artisan 700/800 series	light magenta		10.99	10.44	10.07	★
T125120		Epson Artisan 320, Stylus NX125	black		15.99	14.23	13.73	★

■ Non-stock item

800-228-6351

New Item ★

ITEM #	Alternate	DESCRIPTION	RETAIL	EACH	24	ONLINE
--------	-----------	-------------	--------	------	----	--------

www.branchdist.com

EPSON

INKJET CARTRIDGES (continued)

T125220		Epson Artisan 320, Stylus NX125	cyan	11.99	10.67	10.29	★
T125320		Epson Artisan 320, Stylus NX125	magenta	11.99	10.67	10.29	★
T125420		Epson Artisan 320, Stylus NX125	yellow	11.99	10.67	10.29	★

PrintWerks compatible inkjet cartridges, pages 14-15 ... MACO inkjet labels, page 11

GRC

CALCULATOR and FINANCIAL RIBBONS

PrintWerks financial ribbons, page 24

E201-P		EPC spool C wind	nylon purple	3.50	1.40	1.22	1.22
E203-BR	N203BR	EPC spool universal, includes matrix ink	nylon black/red	3.25	1.21	1.05	1.05
E203-B		EPC spool universal, includes matrix ink	nylon black	3.50	1.40	1.22	1.22
E205		EPC cartridge	nylon black/red	5.95	2.38	2.08	2.08
E244-BR		Commodore 121P spool	nylon black/red	3.95	1.84	1.60	1.60
E246		Star Micronics SP-300	nylon purple				
E248-B		Citizen DP-600 (IR61)	nylon black	5.95	4.04	3.53	3.53
E248-BR		Citizen DP-600 (IR61)	nylon black/red	5.95	4.04	3.53	3.53
E249PR		Verifone 900R	nylon purple/red	5.95	4.04	3.53	3.53
E275		Monroe 2800 EPC	nylon black/red	4.95	2.94	2.56	2.56
■ E282		Epson ERC-03	nylon purple	7.25	3.68	3.21	3.21
E285	N390P	Epson ERC-18	nylon purple	10.50	4.71	4.10	4.10
E287-BR		Epson ERC-23	nylon black/red	5.95	2.69	2.35	2.35
E287-P		Epson ERC-23	nylon purple	5.95	2.69	2.35	2.35

INK ROLLERS

PrintWerks cash register ink rollers, page 24

R812		Ink roller, CP12, EA732R	purple	4.50	2.37	2.06	2.06
R840		Ink roller, CP16, IR40	black	4.50	2.37	2.06	2.06
R842		Ink roller, CP13, IR40T	black/red	4.50	2.37	2.06	2.06
R872		Ink roller, CP7, IR72	black	4.50	2.37	2.06	2.06
R874		Ink roller, CP-19, IR74	black	4.75	2.56	2.23	2.23
R878-BR		Ink roller, CP17R, EA781R (pkg/2)	black/red	5.95	3.37	2.94	2.94
R878-P		Ink roller, CP17, EA781P (pkg/2)	purple	5.95	3.37	2.94	2.94

RIBBONS

T1-N-B		Royal standard	nylon black	7.95	6.39	6.31	6.31
T2-N-B		Universal typewriter spool	nylon black	4.95	2.50	2.18	2.18
T2-N-B/R		Universal typewriter spool	nylon black/red	4.95	2.50	2.18	2.18
T4		Universal typewriter spool	nylon black/white	7.95	6.03	5.26	5.26
T5-N-B		Underwood standard	nylon black	5.95	3.38	2.95	2.95
T5-N-B/R		Underwood standard	nylon black/red	5.95	3.38	2.95	2.95
T6-N-B		Olympia standard	nylon black	5.95	3.38	2.95	2.95
T17-N-B		SCM typewriter, new style	nylon black	6.50	3.82	3.33	3.33

ITEM #	Alternate	DESCRIPTION	RETAIL	EACH	24	ONLINE
--------	-----------	-------------	--------	------	----	--------

www.branchdist.com

GRC

RIBBONS (continued)

T26-N-B		IBM Selectric 72	nylon black	5.95	2.94	2.56	2.56
T28-CFR		IBM Selectric 71	correctable	3.95	2.21	1.92	1.92
T301		AT&T 6100/6200/6610	correctable	5.50	3.75	3.27	3.27
T306		Sharp PA-3000/3100	correctable	4.95	2.94	2.56	2.56
T308		Sharp XQ/ZQ/ZX series	correctable	7.95	5.15	4.49	4.49
T309	SCM 21000	Smith Corona H series	correctable	4.95	2.94	2.56	2.56
T311		Canon AP-800 series	correctable	9.45	7.22	6.37	6.37
T315		Canon AP-200/500 series	correctable	5.95	4.63	4.04	4.04
T316		Canon AP-100/150	correctable	4.95	3.82	3.33	3.33
T321		Swintec 1146/4000/8000	correctable	4.95	3.68	3.21	3.21
T325		Royal Alpha 600, Signet 10	correctable	5.50	3.53	3.08	3.08
T326		Adler/Royal Satellite III - VI	correctable	5.50	3.53	3.08	3.08
■ T328		Olympia MasterType, StarType	correctable	5.95	4.78	4.17	
T330		Brother CE series	correctable	4.95	3.53	3.08	3.08
T333	BRO 1030	Brother AX/GX/SX series	correctable	4.25	2.72	2.37	2.37
T340		IBM Wheelwriter	correctable	6.95	5.00	4.36	4.36
T350		IBM Wheelwriter	lift off tape	4.95	2.94	2.56	2.56
T355		Dry correction tape (min 6)	lift off tape	1.65	0.74	0.64	0.64
T356		Sharp PA-3000/3100 (min 6)	lift off tape	2.95	1.25	1.09	1.09
T357		IBM Sel II/III tacky corr tape (min 6)	lift off tape	1.65	0.74	0.64	0.64
T366	SCM 21050	Smith Corona H series (min 6)	lift off spool	2.05	1.25	1.09	1.09
T369	SCM 21060	Smith Corona H series	lift off cassette	4.95	2.65	2.31	2.31
T376		Olivetti ET series (min 6)	lift off tape	1.80	0.88	0.77	0.77
T381		Olivetti ET-121 to 351	correctable	5.50	3.68	3.21	3.21
T385		IBM Selectric III	correctable	12.75	10.25	8.94	8.94
T387		IBM Selectric II high-yield	correctable	5.95	2.94	2.56	2.56
T407	N436B	Okidata ML-182/320/321/380/390/391	nylon	9.75	4.49	3.91	3.91
■ T408	N410B	Okidata ML393/393 +, Pacemark 3410	nylon	PrintWerks N410B, page 21			
■ T437		Apple Imagewriter II	nylon	7.95	2.94	2.56	
T443		IBM 2380/2381/2390/2391	nylon	11.25	5.49	4.78	4.78
T451		Epson MX-80, LX-800	nylon	6.95	3.37	2.94	2.94
■ T480		Printronic P300/600 (min 6)	nylon	12.45	8.90	7.76	7.76
■ T495		DEC LA30/36, TI Omni 800	nylon	7.50	4.46	3.88	
T511		Citizen GSX-130/140/230	nylon	7.25	4.32	3.77	3.77
T517		Epson LQ-500/800 series	nylon	6.95	4.12	3.59	3.59
T526	KX-P145	Panasonic KX-P1080/1124	nylon	10.95	4.93	4.29	4.29
T528	KX-P150	Panasonic KX-P2123/2180	nylon	9.95	5.34	4.65	4.65
■ T534		Panasonic KX-P1524/1624	nylon	12.50	5.88	5.13	
T575		Okidata ML590/591 only (Not ML520/521)	nylon	12.45	4.49	3.91	3.91
T800	Old 3056-0	Swintec 7000/7040, Nakajima AE830	correctable	10.95	6.25	5.45	5.45

PrintWerks computer, POS and typewriter ribbons, ink rollers, page 24

GRC CATALOG

GRC

GRC Product Catalog

FREE



■ Non-stock item

800-228-6351

New Item ★

ITEM #	Alternate	DESCRIPTION	RETAIL	EACH	24	ONLINE
--------	-----------	-------------	--------	------	----	--------

www.branchdist.com

HP

INKJET CARTRIDGES

Yield

51604A		HP Quietjet, Thinkjet	black		17.48	13.68	13.37	
■ 51626A	R-HP26	HP 26 ink cartridge	black	790	44.88	35.58	34.76	
■ 51629A	R-HP29	HP 29 ink cartridge	black	720	44.20	35.04	34.23	
51645A	R-HP45	HP 45 ink cartridge	black	830	41.91	32.87	32.11	
51649A	R-HP49	HP 49 ink cartridge	tri-color	350	46.33	37.52	36.66	
C1823D	R-HP23	HP 23 ink cartridge	tri-color	620	51.39	40.31	39.38	
■ C4836A		HP 11 ink cartridge	cyan	1750	44.42	35.21	34.40	
■ C4837A		HP 11 ink cartridge	magenta	1750	44.42	35.21	34.40	
■ C4838A		HP 11 ink cartridge	yellow	1750	44.42	35.21	34.40	
■ C4844A		HP 10 ink cartridge (use with #11)	black	1750	44.42	35.21	34.40	
C4902AN		HP 940 ink cartridge	black	1000	30.84	24.44	23.87	
C4903AN		HP 940 ink cartridge	cyan	900	22.80	17.88	17.47	
C4904AN		HP 940 ink cartridge	magenta	900	22.80	17.88	17.47	
C4905AN		HP 940 ink cartridge	yellow	900	22.80	17.88	17.47	
C4906AN		HP 940XL ink cartridge - high capacity	black	2200	45.45	35.65	34.83	
C4907AN		HP 940XL ink cartridge - high capacity	cyan	1400	30.47	23.60	23.06	?
C4908AN		HP 940XL ink cartridge - high capacity	magenta	1400	30.47	23.60	23.06	?
C4909AN		HP 940XL ink cartridge - high capacity	yellow	1400	30.47	23.60	23.06	?
C5010DN	R-HP14C	HP 14 ink cartridge	tri-color	470	40.23	31.73	31.00	
C5011DN	R-HP14B	HP 14 ink cartridge	black	800	29.84	23.54	23.00	
C6578DN	R-HP78	HP 78 ink cartridge	tri-color	450	45.39	35.69	34.87	
■ C6602A		HP POS ink cartridge	black	n/a	21.95	17.32	17.00	
■ C6602R		HP POS ink cartridge	red	n/a	21.95	17.32	17.00	
C6614DN	R-HP20	HP 20 ink cartridge	black	500	42.11	33.04	32.28	
C6615DN	R-HP15	HP 15 ink cartridge	black	600	39.60	30.98	30.26	
C6625AN	R-HP17	HP 17 ink cartridge	tri-color	410	42.30	33.88	33.10	
C6656AN	R-HP56	HP 56 ink cartridge	black	520	28.66	22.14	21.63	
C6657AN	R-HP57	HP 57 ink cartridge	tri-color	500	45.39	35.52	34.70	
C6658AN		HP 58 ink cartridge	photo	140	33.82	26.80	26.18	
C8721WN	R-HP02B	HP 02 ink cartridge	black	660	23.88	18.69	18.26	
C8727AN	R-HP27	HP 27 ink cartridge	black	280	24.34	18.95	18.52	
C8728AN	R-HP28	HP 28 ink cartridge	tri-color	240	30.35	24.06	23.51	
C8765WN	R-HP94	HP 94 ink cartridge	black	480	28.66	22.26	21.75	
C8766WN	R-HP95	HP 95 ink cartridge	tri-color	330	32.89	25.74	25.15	
C8767WN	R-HP96	HP 96 ink cartridge	black	860	40.58	31.53	30.80	
C8771WN	R-HP02C	HP 02 ink cartridge	cyan	400	12.47	9.99	9.76	
C8772WN	R-HP02M	HP 02 ink cartridge	magenta	370	12.47	9.99	9.76	
C8773WN	R-HP02Y	HP 02 ink cartridge	yellow	500	12.47	9.99	9.76	
C8774WN	R-HP02LC	HP 02 ink cartridge	light cyan	220	12.47	9.99	9.76	
C8775WN	R-HP02LM	HP 02 ink cartridge	light magenta	230	12.47	9.99	9.76	
C9351AN	R-HP21	HP 21 ink cartridge	black	190	18.37	14.31	13.98	
C9352AN	R-HP22	HP 22 ink cartridge	tri-color	165	23.35	18.36	17.94	
C9361WN	R-HP93	HP 93 ink cartridge	tri-color	230	28.01	22.04	21.53	
C9362WN	R-HP92	HP 92 ink cartridge	black	210	18.37	14.20	13.87	
C9363WN	R-HP97	HP 97 ink cartridge	tri-color	580	45.39	35.61	34.79	

PrintWerks compatible inkjet cartridges, pages 15-16

■ Non-stock item

800-228-6351

New Item ★

ITEM #	Alternate	DESCRIPTION	RETAIL	EACH	24	ONLINE
--------	-----------	-------------	--------	------	----	--------

www.branchdist.com

HP

INKJET CARTRIDGES (continued)

Yield

C9364WN	R-HP98	HP 98 ink cartridge	black	420	28.66	22.14	21.63	
C9368AN		HP 100 ink cartridge	photo gray	80	33.82	27.38	26.75	
C9369WN	R-HP99	HP 99 ink cartridge	photo color	130	33.82	27.09	26.47	
C9385AN		HP 88 ink cartridge	black	900	27.25	21.54	21.05	
C9386AN		HP 88 ink cartridge	cyan	940	18.18	14.65	14.31	
C9387AN		HP 88 ink cartridge	magenta	1130	18.18	14.65	14.31	
C9388AN		HP 88 ink cartridge	yellow	850	18.18	14.65	14.31	
C9391AN	R-HP88XLB	HP 88XL ink cartridge - high capacity	cyan	1210	30.85	24.39	23.83	
C9392AN	R-HP88XLC	HP 88XL ink cartridge - high capacity	magenta	1210	30.85	24.39	23.83	
C9393AN	R-HP88XLM	HP 88XL ink cartridge - high capacity	yellow	1210	30.85	24.39	23.83	
C9396AN	R-HP88XLY	HP 88XL ink cartridge - high capacity	black	2350	46.51	36.78	35.93	
CB304AN		HP 110 ink cartridge *4" x 6" prints	photo cartridge	55	27.25	22.07	21.56	
CB316WN		HP 564 ink cartridge	black	250	14.29	12.00	11.58	
CB317WN		HP 564 ink cartridge	black photo	130	11.41	9.57	9.24	
CB318WN		HP 564 ink cartridge	cyan	300	11.41	9.57	9.24	
CB319WN		HP 564 ink cartridge	magenta	300	11.41	9.57	9.24	
CB320WN		HP 564 ink cartridge	yellow	300	11.41	9.57	9.24	
CN684WN	Old CB321WN	HP 564XL ink cartridge - high capacity	black	800	28.85	24.21	23.35 ↓	★
CB322WN		HP 564XL ink cartridge - high capacity	black photo	290	22.36	18.77	18.11	
CB323WN		HP 564XL ink cartridge - high capacity	cyan	750	22.36	18.77	18.11	
CB324WN		HP 564XL ink cartridge - high capacity	magenta	750	22.36	18.77	18.11	
CB325WN		HP 564XL ink cartridge - high capacity	yellow	750	22.36	18.77	18.11	
CB334WN		HP 54 ink cartridge	black	600	42.63	33.82	33.05	
CB335WN	R-HP74	HP 74 ink cartridge	black	200	18.37	14.56	14.23	
CB336WN		HP 74XL ink cartridge - high capacity	black	750	43.89	34.46	33.67	
CB337WN	R-HP75	HP 75 ink cartridge	tri-color	170	23.34	18.51	18.08	
CB338WN		HP 75XL ink cartridge - high capacity	tri-color	520	50.92	40.36	39.44	
CC635A		HP 701 ink cartridge	black	695	41.33	34.01	32.81	
CC640WN	R-HP60B	HP 60 ink cartridge	black	200	18.37	14.41	14.08	
CC641WN		HP 60XL ink cartridge - high capacity	black	600	43.89	34.42	33.63	
CC643WN	R-HP60C	HP 60 ink cartridge	tri-color	165	23.35	18.31	17.89	
CC644WN		HP 60XL ink cartridge - high capacity	tri-color	440	50.92	39.94	39.02	
CC635A		HP 701 ink cartridge	black	695	40.52	32.81	32.06	
CC653AN	R-HP901B	HP 901 ink cartridge	black	200	18.37	14.41	14.08	
CC654AN		HP 901XL ink cartridge - high capacity	black	700	37.86	31.47	30.75	
CC656AN	R-HP901C	HP 901 ink cartridge	tri-color	360	33.83	26.53	25.92	
CD971AN		HP 920 ink cartridge	black	420	24.62	19.32	18.87	
CD972AN		HP 920XL ink cartridge - high capacity	cyan	700	18.73	14.69	14.36	
CD973AN		HP 920XL ink cartridge - high capacity	magenta	700	18.73	14.69	14.36	
CD974AN		HP 920XL ink cartridge - high capacity	yellow	700	18.73	14.69	14.36	
CD975AN		HP 920XL ink cartridge - high capacity	black	1200	40.40	31.69	30.97	
CH561WN		HP 61 ink cartridge	black	190	17.15	14.40	13.89	★
CH562WN		HP 61 ink cartridge	color	165	23.48	19.72	19.02	★
CH563WN		HP 61XL ink cartridge - high capacity	black	480	35.35	29.67	28.62	★
CH564WN		HP 61XL ink cartridge - high capacity	color	330	37.50	31.48	30.36	★

PrintWerks compatible inkjet cartridges, pages 15-16

ITEM #	Alternate	DESCRIPTION	RETAIL	EACH	24	ONLINE
--------	-----------	-------------	--------	------	----	--------

www.branchdist.com

HP

INKJET CARTRIDGES (continued)

Yield


CH634AN		HP 920 ink cartridge	cyan	300	11.70	9.40	9.18
CH635AN		HP 920 ink cartridge	magenta	300	11.70	9.18	8.97
CH636AN		HP 920 ink cartridge	yellow	300	11.70	9.18	8.97

PrintWerks compatible inkjet cartridges, pages 15-16

HP

INKJET TWINPACKS and COMBOPACKS

Sorted by cartridge number:

C6653FN		HP 15 TwinPack	black/black		66.99	46.00	46.00	46.00
C8789FN		HP 15/78 ComboPack	black/color		71.99	47.50	47.50	47.50
C9508FN		HP 21 TwinPack	black/black		34.99	27.00	27.00	27.00
C9509FN		HP 21/22 ComboPack	black/color		38.99	29.50	29.50	29.50
CC580FN		HP 22 TwinPack	color/color		44.99	34.50	34.50	34.50
C9322FN		HP 27 TwinPack	black/black		45.99	35.50	35.50	35.50
C9323FN		HP 27/28 ComboPack	black/color		46.99	38.50	38.50	38.50
C6650FN		HP 45 TwinPack	black/black		69.99	54.00	54.00	54.00
C8788FN		HP 45/78 ComboPack	black/color		73.99	61.00	61.00	61.00
C9319FN		HP 56 TwinPack	black/black		48.99	39.00	39.00	39.00
C9320FN		HP 57 TwinPack	color/color		76.99	64.50	64.50	64.50
C9321FN		HP 56/57 ComboPack	black/color		60.99	51.00	51.00	51.00
CD947FN		HP 60 ComboPack	black/color		38.99	30.50	30.50	30.50
CC659FN		HP 74/75 ComboPack	black/color		38.99	31.00	31.00	31.00
CC606FN		HP 88 ComboPack, cyan/magenta/yellow	3 colors		52.99	42.00	42.00	42.00 *
C9512FN		HP 92 TwinPack	black/black		34.99	26.50	26.50	26.50
C9513FN		HP 92/93 ComboPack	black/color		42.99	34.50	34.50	34.50
C9350FN		HP 94 TwinPack	black/black		51.99	41.50	41.50	41.50
C9354FN		HP 94/95 ComboPack	black/color		58.99	47.00	47.00	47.00
CB327FN		HP 95/98 ComboPack	black/color		56.99	44.50	44.50	44.50
C9348FN		HP 96 TwinPack	color/color		69.99	57.00	57.00	57.00
C9353FN		HP 96/97 Combo	black/color		72.99	61.00	61.00	61.00
C9349FN		HP 97 TwinPack	color/color		75.99	65.00	65.00	65.00
C9514FN		HP 98 TwinPack	black/black		54.99	41.50	41.50	41.50
CD994FN		HP 564 ComboPack, cyan/magenta/yellow	3 colors		32.99	26.50	26.50	26.50 *
CN069FN		HP 901 ComboPack	black/color		50.99	41.00	41.00	41.00

INKJET PAPER

■ C6039A		Prem. Photo Paper, Glossy, 15 sheets	8 1/2 x 11, 10 mil		11.99	9.05	8.83
■ C6979A		Prem. Photo Paper, Glossy, 50 sheets	8 1/2 x 11, 10 mil		25.99	21.95	21.42
■ Q1989A		Prem. Photo Paper, Glossy, 60 sheets	4 x 6, 10 mil		10.99	9.42	9.20
■ Q1993A		Prem. Photo Paper, Soft Gloss, 15 sheets	8 1/2 x 11, 10 mil		11.99	9.78	9.65

ITEM #	Alternate	DESCRIPTION	RETAIL	EACH	24	ONLINE
--------	-----------	-------------	--------	------	----	--------

www.branchdist.com

HP

LASERJET TONER

Yield

C4096A	R-C4096A	HP LaserJet 2100 series, 2200 series	black toner	5000	154.46	105.81	103.32	
C4127X	R-C4127X	HP LaserJet 4000, 4050 high yield	black toner	10000	197.47	134.90	131.73	
C4129X	R-C4129X	HP LaserJet 5000, 5100	black toner	10000	253.01	175.12	171.00	
■ C7115A	R-C7115A	HP LaserJet 1000, 1200, 1220	black toner	2500	94.45	64.70	63.18	
C7115X	R-C7115X	HP LaserJet 1000, 1200, 1220 high yield	black toner	3500	117.99	81.66	79.74	
CB435A	R-CB435A	HP LaserJet P1005, P1006	black toner	1500	93.92	63.51	62.01	★
■ CB436A	R-CB436A	HP LaserJet P1505, M1522	black toner	2000	107.95	74.92	73.15	★
■ CE250X		HP LaserJet CM3530, CP3525 - HY	black toner	10500	271.38	188.33	183.89	★
■ CE251A		HP LaserJet CM3530, CP3525	ctan toner	7000	367.24	257.55	251.49	★
■ CE252A		HP LaserJet CM3530, CP3525	ctan toner	7000	367.24	257.55	251.49	★
■ CE253A		HP LaserJet CM3530, CP3525	ctan toner	7000	367.24	257.55	251.49	★
■ CE254A		HP LaserJet CM3530, CP3525	waste bottle	----	15.00	11.28	11.01	★
■ CE505A	R-CE505A	HP LaserJet P2035	black toner	2300	115.78	85.17	83.16	★
■ Q2610A	R-Q2610A	HP LaserJet 2300 series	black toner	6000	185.80	127.27	124.27	
Q2612A	R-Q2612A	HP LaserJet 1010, 1012, 1015, 1020, 3015	black toner	2000	107.95	73.37	71.65	
Q2613X	R-Q2613X	HP LaserJet 1300 series - HY	black toner	4000	137.16	94.94	92.71	
■ Q5942A	R-Q1338U	HP LaserJet 4250	black toner	10000		Call		
■ Q5942X	R-Q1338U	HP LaserJet 4250 - HY	black toner	20000		Call		
■ Q5949X	R-Q5949X	HP LaserJet 1320, 3390	black toner	6000		Call		
■ Q7551A	R-Q7551A	HP LaserJet P3005, M3035	black toner	6500		Call		
■ Q7551X	R-Q7551X	HP LaserJet P3005, M3035 - HY	black toner	12000		Call		
■ Q7553X	R-Q7553X	HP LaserJet P2015 - HY	black toner	7800		Call		

PrintWerks compatible laser toner, pages 19-22

KODAK

New!

INKJET CARTRIDGES

1143641	All 8891467	Kodak #10 ink cartridge	black	12.95	10.03	9.78	★
8946501	All 1935766	Kodak #10 ink cartridge	color	23.95	18.40	17.94	★

FOR: Easyshare 5100/5300/5500
 ESP 3/5/7/9
 ESP 3250/5250/7250
 ESP Office 6150



Can't find it? Check the PRODUCT INDEX for a complete list of "what-fits-what".
 Still can't find it? Try our BRANCH-OUT program and let us find it for you - fast!

ITEM #	Alternate	DESCRIPTION	RETAIL	EACH	24	ONLINE
--------	-----------	-------------	--------	------	----	--------

www.branchdist.com

LEXMARK

INKJET CARTRIDGES

ITEM #	Alternate	DESCRIPTION	Yield	RETAIL	EACH	24	ONLINE	
10N0016	R-016	Lexmark 16 ink cartridge	black	410	38.80	32.63	31.86	
10N0026	R-026	Lexmark 26 ink cartridge	color	275	42.16	35.46	34.62	
12A1970	R-050	Lexmark 70 ink cartridge	black	600	44.78	37.65	36.76	
- 12A1980		Lexmark 80 ink cartridge	color	275	50.56	41.93	40.94	
14N1068		Lexmark 100XL ink cartridge	black high-cap		27.99	26.36	25.74	★
14N0169		Lexmark 100XL ink cartridge	cyan high-cap		19.99	18.33	17.89	★
14N0170		Lexmark 100XL ink cartridge	magenta high-cap		19.99	18.33	17.89	★
14N0171		Lexmark 100XL ink cartridge	yellow high-cap		19.99	18.33	17.89	★
15M0120	R-0120	Lexmark 20 ink cartridge	color	275	52.98	44.55	43.51	
17G0050	R-050	Lexmark 50 ink cartridge	black	410	38.81	32.63	31.86	
17G0060	R-060	Lexmark 60 ink cartridge	color	225	47.02	39.53	38.60	
- 18C0031		Lexmark 31 ink cartridge	photo color	135	41.04	34.52	33.71	
18C0032		Lexmark 32 ink cartridge	black	200	29.48	24.78	24.20	
18C0033		Lexmark 33 ink cartridge	color	190	31.72	26.67	26.05	
18C0034	R-0034	Lexmark 34 ink cartridge	black high-cap	475	31.49	27.61	26.96	
18C0035	R-0035	Lexmark 35 ink cartridge	color high-cap	450	38.99	34.52	33.71	
18C0781		Lexmark #1 ink cartridge (Z735)	black		29.48	24.78	24.20	
18C1428		Lexmark 28 ink cartridge	black		23.51	19.77	19.31	
18C1429		Lexmark 29 ink cartridge	color		24.63	20.71	20.22	
18C1523		Lexmark 23 ink cartridge - return program	black		25.75	21.65	21.14	
18C1524		Lexmark 24 ink cartridge - return program	color		27.99	23.53	22.98	
18C2090		Lexmark 14 ink cartridge	black		24.25	20.40	19.92	
18C2110		Lexmark 15 ink cartridge	color		26.87	22.59	22.06	
18C2130		Lexmark 36 ink cartridge	black		24.63	20.71	20.22	
18C2140		Lexmark 37 ink cartridge	color		26.87	22.59	22.06	
18C2170		Lexmark 36XL ink cartridge	black high-cap		31.35	27.61	26.96	
18C2180		Lexmark 37XL ink cartridge	color high-cap		39.20	34.52	33.71	
18L0032	R-082	Lexmark 82 ink cartridge	black	600	41.04	34.52	33.71	
18L0042	R-083	Lexmark 83 ink cartridge	color	450	52.98	44.55	43.51	
18Y0143		Lexmark 43XL ink cartridge	color high-cap		39.20	34.52	33.71	
18Y0144		Lexmark 44XL ink cartridge	black high-cap		31.35	27.61	26.96	

PrintWerks ink cartridges, page 16 ... MACO inkjet/laser labels, page 11

MACO

ROLL TICKETS

ITEM #	DESCRIPTION	Size	Per RI	RETAIL	EACH	24	ONLINE
18-610	Single roll tickets, red	1 x 2	2000	5.41	2.68	2.57	
18-611	Single roll tickets, blue	1 x 2	2000	4.41	2.68	2.57	
18-620	Double roll tickets, red	2 x 2	2000	10.94	5.35	5.13	
18-621	Double roll tickets, blue	2 x 2	2000	10.94	5.35	5.13	



ITEM #	Alternate	DESCRIPTION	RETAIL	EACH	24	ONLINE
--------	-----------	-------------	--------	------	----	--------

www.branchdist.com

MACO

COMPUTER LABELS			Size	Pkg	Per box		
■ 42-451	4013	Continuous labels, 1-up	3 1/2 x 15/16	5000	35.12	12.21	11.45
Special Order - Minmum: 9 boxes							

FILE FOLDER LABELS			Size	Pkg			
FF-L1	FF3W	File folder label, white	1/3 cut	250	5.20	1.03	0.99
FF-L2	FF3DR	File folder label, red	1/3 cut	250	5.20	1.03	0.99
FF-L3	FF3Y	File folder label, yellow	1/3 cut	250	5.20	1.03	0.99
FF-L4	FF3LB	File folder label, light blue	1/3 cut	250	5.20	1.03	0.99
FF-L5	FF3DB	File folder label, dark blue	1/3 cut	250	5.20	1.03	0.99
FF-L6	FF3G	File folder label, green	1/3 cut	250	5.20	1.03	0.99
FF-L7	FF3O	File folder label, orange	1/3 cut	250	5.20	1.03	0.99
FF-L10	FF3P	File folder label, purple	1/3 cut	250	5.20	1.03	0.99
FF-LA1	FF3MULTI	File folder label, assorted	1/3 cut	250	5.20	1.03	0.99



INKJET and LASER LABELS

ML-0100	5165	Inkjet/laser label, white	8 1/2 x 11	100	39.98	8.97	8.61	8.28
ML-0200	---	Inkjet/laser label, white	5 1/2 x 8 1/2	200	42.83	9.42	9.04	8.69
ML-0400	---	Inkjet/laser label, white	5 1/2 x 4 1/4	400	42.83	9.42	9.04	8.69
ML-0600	5164	Inkjet/laser label, white	3 1/3 x 4	600	39.98	8.97	8.61	8.28
ML-1000	5163	Inkjet/laser label, white	2 x 4	1000	38.82	8.97	8.61	8.28
ML-1400	5162	Inkjet/laser label, white	1 1/3 x 4	1400	38.82	8.97	8.61	8.28
ML-2000	5161	Inkjet/laser label, white	1 x 4	2000	38.82	8.97	8.61	8.28
ML-2025	5261	Inkjet/laser label, 25 sheets	1 x 4	500	12.23	3.74	3.59	3.45
ML-3000	5160	Inkjet/laser label, white	1 x 2 5/8	3000	38.82	8.97	8.61	8.28
ML-3000B	5960	Inkjet/laser label, white	1 x 2 5/8	7500	87.36	22.72	21.81	20.97
ML-3025	5260	Inkjet/laser label, 25 sheets	1 x 2 5/8	750	12.23	3.74	3.59	3.45
■ ML-4000*	5660	Laser printer (only) label, clear	1 x 2 5/8	1500	49.84	22.15	21.27	
■ ML-5000*	---	Inkjet/laser label, white	1 x 1 1/2	5000	43.66	9.42	9.04	
ML-7560	8692	Inkjet/laser CD/DVD label, white	2-up	40	11.55	3.24	3.11	2.99
■ ML-8000*	5979	Inkjet/laser label, asst flourescent colors	1 x 2 5/8	450	15.65	8.64	8.29	
ML-8025	5267	Inkjet/laser label, 25 sheets	1/2 x 1 3/4	2000	12.23	3.74	3.59	3.45
■ ML-8100*	5167	Inkjet/laser label, 100 sheets	1/2 x 1 3/4	8000	39.98	8.97	8.61	
ML-8550	5371	Inkjet/laser bus cards, white	2 x 3 1/2	250	15.62	7.86	7.55	7.26
ML-8551	5376	Inkjet/laser bus cards, ivory	2 x 3 1/2	250	15.62	7.86	7.55	7.26
ML-8575	5389	Inkjet/laser post cards, white 2-up	4 x 6	100	24.99	12.29	11.80	11.35
■ ML-FF30*	5266	Inkjet/laser folder label, assorted	1/3 cut	750	21.59	7.51	7.21	
ML-FF31	5366	Inkjet/laser folder label, white	1/3 cut	1500	39.98	11.24	10.79	10.37
■ * Minmum order: 5 pkg								



Can't find it? Check the **PRODUCT INDEX** for a complete list of "what-fits-what".
Still can't find it? Try our **BRANCH-OUT** program and let us find it for you - fast!

ITEM #	Alternate	DESCRIPTION	RETAIL	EACH	24	ONLINE
--------	-----------	-------------	--------	------	----	--------

www.branchdist.com

MACO

ROUND LABELS

			Size	Pkg			
MR-808	---	Round label, white	1/2	1000	7.17	1.56	1.49
MR-1212	R1212	Round label, white	3/4	1000	7.84	1.42	1.36
MR-1212-3	T5461	Round label, light blue	3/4	1000	7.79	1.35	1.29
MR-1212-4	T5462	Round label, yellow	3/4	1000	7.79	1.35	1.29
MR-1212-5	T5463	Round label, green	3/4	1000	7.79	1.35	1.29
MR-1212-7	T5465	Round label, orange	3/4	1000	7.79	1.35	1.29
MR-1212-8	T5466	Round label, red	3/4	1000	7.79	1.35	1.29
MR-1212-10	T5468	Round label, green glo	3/4	1000	7.79	1.35	1.29
MR-1212-11	T5469	Round label, dark blue	3/4	1000	7.79	1.35	1.29
MR-1212-12	T5470	Round label, yellow glo	3/4	1000	7.79	1.35	1.29
MR-1212-13	T5471	Round label, orange glo	3/4	1000	7.79	1.35	1.29
MR-1212-14	---	Round label, purple	3/4	1000	7.79	1.35	1.29
MR-1212-A1	T5472	Round label, assorted colors	3/4	1000	8.69	1.46	1.40
MR-1616	R1616	Round label, white	1	600	8.07	1.47	1.41
MR-2020	R2020	Round label, white	1 1/4	500	9.94	1.56	1.49



RECTANGULAR LABELS

			Size	Pkg			
MS-508	S508	Rectangular label, white	5/16 x 1/2	1000	6.70	1.56	1.49
MS-610	S610	Rectangular label, white	3/8 x 5/8	1000	7.49	1.33	1.28
MS-620	S620	Rectangular label, white	3/8 x 1 1/4	1000	9.07	1.56	1.49
MS-812	S812	Rectangular label, white	1/2 x 3/4	1000	6.68	1.33	1.28
MS-816	S816	Rectangular label, white	1/2 x 1	1000	8.41	1.56	1.49
MS-828	S828	Rectangular label, white	1/2 x 1 3/4	840	8.59	1.33	1.28
MS-1020	S1020	Rectangular label, white	5/8 x 1 1/4	800	9.94	1.56	1.49
MS-1216	S1216	Rectangular label, white	3/4 x 1	1000	9.29	1.56	1.49
MS-1224	S1224	Rectangular label, white	3/4 x 1 1/2	500	7.35	1.56	1.49
MS-1624	S1624	Rectangular label, white	1 x 1 1/2	500	7.86	1.56	1.49
MS-1648	S1648	Rectangular label, white	1 x 3	250	6.02	1.33	1.28
MS-2448	S2448	Rectangular label, white	1 1/2 x 3	160	6.26	1.33	1.28
MS-6424	S6424	Rectangular label, white	4 x 1 1/2	160	8.45	1.33	1.28
MS-6432	S6432	Rectangular label, white	4 x 2	120	6.98	1.33	1.28
MS-6448	S6448	Rectangular label, white	4 x 3	80	9.29	1.56	1.49
MS-6496	S6496	Rectangular label, white	4 x 6	40	8.85	1.33	1.28
MS-8048	S8048	Rectangular label, white	5 x 3	40	5.73	1.33	1.28



SPECIALTY LABELS and REINFORCEMENTS

			Size	Per RI			
OS-801	NEW!	Clear seal (meets new postal regulations)	1 1/2	320	12.72	6.44	6.19
MT-909	TD909	Reinforcements, white (min 12 bxs)	1/4" hole	200	1.76	---	0.48

NAME BADGES

			Size	Pkg			
NB-266A	5146	Name badge, gold border	2 1/4 x 3 3/8	100	3.80	1.49	1.43
NB-277A	5147	Name badge, plain white	2 1/4 x 3 3/8	100	3.80	1.49	1.43

New package!



ITEM #	Alternate	DESCRIPTION	RETAIL	EACH	24	ONLINE
--------	-----------	-------------	--------	------	----	--------

www.branchdist.com

PRINTWERKS™ Inkjet

BROTHER INK CARTRIDGES

Yield

R-LC41Bk	LC41Bk	Brother MFC-410CN/620CN/820CW	black	500	7.77	4.66	4.24	3.88
R-LC41C	LC41C	Brother MFC-410CN/620CN/820CW	cyan	400	6.67	4.00	3.64	3.33
R-LC41M	LC41M	Brother MFC-410CN/620CN/820CW	magenta	400	6.67	4.00	3.64	3.33
R-LC41Y	LC41Y	Brother MFC-410CN/620CN/820CW	yellow	400	6.67	4.00	3.64	3.33
R-LC51Bk	LC51Bk	Brother MFC-240C/440CN/665CW/845CW	black	500	9.63	5.78	5.25	4.82
R-LC51C	LC51C	Brother MFC-240C/440CN/665CW/845CW	cyan	400	8.67	5.20	4.73	4.33
R-LC51M	LC51M	Brother MFC-240C/440CN/665CW/845CW	magenta	400	8.67	5.20	4.73	4.33
R-LC51Y	LC51Y	Brother MFC-240C/440CN/665CW/845CW	yellow	400	8.67	5.20	4.73	4.33

CANON INK CARTRIDGES

Yield

R-BCI3B	BCI-3eBk	Canon BCI-3e series ink cartridge	black tank		6.30	3.84 Now 1.99		1.99
R-BCI3C	BCI-3e & 6C	Canon BCI-3e and BCI-6 series (universal)	cyan tank		5.75	3.44 Now 1.99		1.99
R-BCI3M	BCI-3e & 6M	Canon BCI-3e and BCI-6 series (universal)	magenta tank		5.75	3.44 Now 1.99		1.99
R-BCI3Y	BCI-3e & 6Y	Canon BCI-3e and BCI-6 series (universal)	yellow tank		5.75	3.44 Now 1.99		1.99
R-BCI6B	BCI-6Bk	Canon BCI-6 series ink cartridge	black tank		5.75	3.44 Now 1.99		1.99
R-BCI21B	BCI-21 & 24Bk	Canon BCI-21 and BCI-24 (universal)	black tank		4.40	2.63 Now 1.99		1.99
R-BCI21C	BCI-21 & 24C	Canon BCI-21 and BCI-24 (universal)	color tank		5.50	3.29 Now 1.99		1.99
R-CL51	CL-31/41/51	Canon iP1600/MP170	color high-cap	545	25.99	18.00	17.31	16.88
R-CLI8B	CLI-8Bk	Canon iP4200/5200/6600	black		12.65	8.85	8.21	7.67
R-CLI8C	CLI-8C	Canon iP4200/5200/6600	cyan		12.65	8.85	8.21	7.67
R-CLI8M	CLI-8M	Canon iP4200/5200/6600	magenta		12.65	8.85	8.21	7.67
R-CLI221B	CLI-221Bk	Canon iP3600/4600	black		10.99	7.68	7.13	6.65 ★
R-CLI221C	CLI-221C	Canon iP3600/4600	cyan		10.99	7.68	7.13	6.65 ★
R-CLI221M	CLI-221M	Canon iP3600/4600	magenta		10.99	7.68	7.13	6.65 ★
R-CLI221Y	CLI-221Y	Canon iP3600/4600	yellow		10.99	7.68	7.13	6.65 ★
R-PGI220	PGI-220	Canon iP3600/4600	pigment black		12.99	9.22	8.56	7.99 ★
R-CLI8Y	CLI-8Y	Canon iP4200/5200/6600	yellow		12.65	8.85	8.21	7.67
R-PG50	PG-30/40/50	Canon iP1600/MP170	black high-cap	750	21.99	16.67	16.03	15.63
R-PGI5B	PGI-5Bk	Canon iP4200/5200/6600	pigment black		15.05	10.54	9.79	9.13



DELL INK CARTRIDGES

Yield

R-016	K1014, T0529	Dell 720 Color Printer, A920 (series 1)	black	410	24.95	15.83	14.70	13.72
R-026	K1016, T0530	Dell 720 Color Printer, A920 (series 1)	color	275	27.95	16.92	15.71	14.67
		Dell 926, V305, V305W (series 9)			Not available			
R-082	7Y743, X0502	Dell A940, A960 (series 2)	black	600	23.95	14.00	13.00	12.13
R-083	7Y745, X0504	Dell A940, A960 (series 2)	color	450	25.95	15.31	14.21	13.27
		Dell 948 (series 11), Dell V105 (series 15)			Not available			
R-274	GR274, CH883	Dell 966, 968, 968W (series 7)	black high cap		25.95	16.91	15.70	14.65
R-277	GR277, CH884	Dell 966, 968, 968W (series 7)	color high cap		29.95	19.98	18.56	17.32
R-324	PG324	Dell 725, 810 All-In-One (series 6)	color		19.95	14.65	14.18	14.18
R-4640	R5956, T5480	Dell 922/924/942/944/946/962/964 (ser 5)	black high cap	600	24.95	15.38	14.29	13.33
R-4646	R5974, T5482	Dell 922/924/942/944/946/962/964 (ser 5)	color high cap	450	28.95	18.46	17.14	16.00

MACO Inkjet labels, page 11

ITEM #	Alternate	DESCRIPTION	RETAIL	EACH	24	ONLINE
--------	-----------	-------------	--------	------	----	--------

www.branchdist.com

PRINTWERKS™ Inkjet

EPSON INK CARTRIDGES

Yield

R-S187	S187093	Epson Stylus Color 400/440/500/600/640	black	8.89	5.33	4.71	3.29
R-S189	S189108	Epson Stylus Color 740/800/880/1520	black	10.00	6.00	5.29	3.71
R-S191	S191089	Epson Sty Col 400/440/600/640/800/880	color	10.89	6.53	5.76	4.04
■ R-T026	T026201	Epson Stylus Photo 810/820	black	12.84	7.71	6.80	4.76
R-T027	T027201	Epson Stylus Photo 810/820	color	15.07	9.04	7.98	5.58
- R-T028	T028201	Epson Stylus Color C60	black	13.33	8.00 Now 3.99		3.99
- R-T029	T029201	Epson Stylus Color C60	color	14.44	8.67 Now 4.39		4.39
- R-T0441	T044120	Epson Stylus Color C64/84, CX6400	black	11.56	8.40 Now 4.59		4.59
■ R-T0442	T044220	Epson Stylus Color C64/84, CX6400	cyan	11.56	8.40 Now 4.59		4.59
- R-T0443	T044320	Epson Stylus Color C64/84, CX6400	magenta	11.56	8.40 Now 4.59		4.59
- R-T0444	T044420	Epson Stylus Color C64/84, CX6400	yellow	11.56	8.40 Now 4.59		4.59
R-T0481	T048120	Epson Stylus Photo R300, RX500	black	11.56	8.10	7.56	5.29
R-T0482	T048220	Epson Stylus Photo R300, RX500	cyan	11.56	8.10	7.56	5.29
R-T0483	T048320	Epson Stylus Photo R300, RX500	magenta	11.56	8.10	7.56	5.29
R-T0484	T048420	Epson Stylus Photo R300, RX500	yellow	11.56	8.10	7.56	5.29
R-T0485	T048520	Epson Stylus Photo R300, RX500	light cyan	11.56	8.10	7.56	5.29
R-T0486	T048620	Epson Stylus Photo R300, RX500	light magenta	11.56	8.10	7.56	5.29
- R-T0601	T060120	Epson Stylus C66/88, CX3800/4800	black	11.56	8.40 Now 4.59		4.59
- R-T0602	T060220	Epson Stylus C66/88, CX3800/4800	cyan	11.56	8.40 Now 4.59		4.59
- R-T0603	T060320	Epson Stylus C66/88, CX3800/4800	magenta	11.56	8.40 Now 4.59		4.59
- R-T0604	T060420	Epson Stylus C66/88, CX3800/4800	yellow	11.56	8.40 Now 4.59		4.59
R-T0691	T060120	Epson Stylus CX5000/6000	black	11.56	8.10	7.56	5.29
R-T0692	T060220	Epson Stylus CX5000/6000	cyan	11.56	8.10	7.56	5.29
R-T0693	T060320	Epson Stylus CX5000/6000	magenta	11.56	8.10	7.56	5.29
R-T0694	T060420	Epson Stylus CX5000/6000	yellow	11.56	8.10	7.56	5.29

HP INK CARTRIDGES

Yield

R-HP02B	C8721WN	HP 02 ink cartridge	black	660	15.95	10.08	9.36	8.73
R-HP02C	C8771WN	HP 02 ink cartridge	cyan	350	9.95	6.29	5.84	5.45
R-HP02M	C8772WN	HP 02 ink cartridge	magenta	350	9.95	6.29	5.84	5.45
R-HP02Y	C8773WN	HP 02 ink cartridge	yellow	490	9.95	6.29	5.84	5.45
R-HP02LC	C8774WN	HP 02 ink cartridge	light cyan	240	9.95	6.29	5.84	5.45
R-HP02LM	C8775WN	HP 02 ink cartridge	light magenta	240	9.95	6.29	5.84	5.45
R-HP14B	C5011DN	HP 14B ink cartridge	black	800	14.95	8.62	8.00	7.47
R-HP14C	C5010DN	HP 14C ink cartridge	tri-color	470	14.95	8.62	8.00	7.47
R-HP15	C6615DN	HP 15 ink cartridge	black	600	15.95	9.23	8.57	8.00
R-HP17	C6625AN	HP 17 ink cartridge	tri-color	410	22.95	13.46	12.50	11.67
R-HP20	C6614DN	HP 20 ink cartridge	black	500	22.95	13.68	12.70	11.85
R-HP21	C9351AN	HP 21 ink cartridge	black	190	16.95	12.69	11.79	11.00
R-HP22	C9352AN	HP 22 ink cartridge	color	165	19.95	15.66	14.54	13.57
R-HP23	C1823D	HP 23 ink cartridge	tri-color	620	22.95	13.23	12.29	11.47
R-HP26	51626A	HP 26 ink cartridge	black	790	17.95	10.77	10.00	9.33
R-HP27	C8727AN	HP 27 ink cartridge	black	280	16.95	9.97	9.26	8.64
R-HP28	C8728AN	HP 28 ink cartridge	tri-color	240	22.95	15.83	14.70	13.72

MACO Inkjet labels, page 11

■ Non-stock item

800-228-6351

New Item ★

ITEM #	Alternate	DESCRIPTION	RETAIL	EACH	24	ONLINE
--------	-----------	-------------	--------	------	----	--------

www.branchdist.com

PRINTWERKS™ Inkjet

HP INK CARTRIDGES (continued)

R-HP29	51629A	HP 29 ink cartridge	black	720	17.95	10.77	10.00	9.33
- R-HP40B	51640A	HP 40 ink cartridge	black	1100	19.95	43.50 Now 6.59		6.59
- R-HP40C	51640C	HP 40 ink cartridge	cyan	1100	19.95	43.50 Now 6.59		6.59
- R-HP40M	51640M	HP 40 ink cartridge	magenta	1100	19.95	43.50 Now 6.59		6.59
- R-HP40Y	51640Y	HP 40 ink cartridge	yellow	1100	19.95	43.50 Now 6.59		6.59
R-HP45	51645A	HP 45 ink cartridge	black	830	15.95	9.23	8.57	8.00
R-HP49	51649A	HP 49 ink cartridge	tri-color	350	27.95	16.92	15.71	14.67
R-HP56	C6656AN	HP 56 ink cartridge	black	520	16.95	9.62	8.93	8.33
R-HP57	C6657AN	HP 57 ink cartridge	tri-color	500	26.95	15.83	14.70	13.72
R-HP60B	CC640WN	HP 60 ink cartridge	black	200	16.95	11.99	11.68	11.68
R-HP60C	CC643WN	HP 60 ink cartridge	tri-color	165	19.95	14.65	14.27	14.27
R-HP74	CB335WN	HP 74 ink cartridge	black	200	16.95	12.16	12.00	11.84
R-HP75	CB337WN	HP 75 ink cartridge	tri-color	170	19.95	13.85	13.67	13.49
R-HP78	C6578AN	HP 78 ink cartridge	color high-cap	600	21.95	13.06	12.13	11.32
R-HP88XLB	C9396AN	HP 88 ink cartridge	black high-cap	2359	27.95	16.64	14.98	13.62
R-HP88XLC	C9391AN	HP 88 ink cartridge	cyan high-cap	1210	24.95	15.00	13.50	12.27
R-HP88XLM	C9392AN	HP 88 ink cartridge	cyan high-cap	1210	24.95	15.00	13.50	12.27
R-HP88XLY	C9393AN	HP 88 ink cartridge	cyan high-cap	1210	24.95	15.00	13.50	12.27
R-HP92	C9362WN	HP 92 ink cartridge	black	210	15.95	9.23	8.57	8.00
R-HP93	C9361WN	HP 93 ink cartridge	color	230	17.95	10.77	10.00	9.33
R-HP94	C8765WN	HP 94 ink cartridge	black	480	17.95	10.77	10.00	9.33
R-HP95	C8766WN	HP 95 ink cartridge	tri-color	330	20.95	12.31	11.43	10.67
R-HP96	C8767WN	HP 96 ink cartridge	black high-cap	860	20.95	12.31	11.43	10.67
R-HP97	C9363WN	HP 97 ink cartridge	color high-cap	580	23.95	13.85	12.86	12.00
R-HP98	C9364WN	HP 98 ink cartridge	black	420	17.95	10.77	10.00	9.33
R-HP99	C9369WN	HP 99 ink cartridge	photo color	130*	24.95	45.66 Now 3.99		9.99
R-HP564B	CB316WN	HP 564 ink cartridge NEW!	black	250	12.95	8.08	7.50	7.00 ★
R-HP564C	CB317WN	HP 564 ink cartridge NEW!	cyan	300	9.95	6.54	6.07	5.67 ★
R-HP564M	CB318WN	HP 564 ink cartridge NEW!	magenta	300	9.95	6.54	6.07	5.67 ★
R-HP564Y	CB319WN	HP 564 ink cartridge NEW!	yellow	300	9.95	6.54	6.07	5.67 ★
R-HP901XLB	CC654AN	HP 901 ink cartridge	black high-cap	700	26.95	15.83	14.70	13.72
R-HP901C	CC656AN	HP 901 ink cartridge	tri-color	360	28.95	17.32	16.87	16.87
R-HP920B	CD971AN	HP 920 ink cartridge NEW!	black	420	12.95	7.68	7.13	6.65 ★
R-HP920C	CH634AN	HP 920 ink cartridge NEW!	cyan	300	9.95	6.54	6.07	5.67 ★
R-HP920M	CH635AN	HP 920 ink cartridge NEW!	magenta	300	9.95	6.54	6.07	5.67 ★
R-HP920Y	CH636AN	HP 920 ink cartridge NEW!	yellow	300	9.95	6.54	6.07	5.67 ★



LEXMARK INK CARTRIDGES

Yield

R-0120	15M0120	Lexmark 20 ink cartridge	tri-color	275	27.95	16.60	15.41	14.39
R-016	10N0016	Lexmark 16 , Dell 529 ink cartridge	black	410	24.95	15.83	14.70	13.72
R-026	10N0026	Lexmark 26, Dell 530 ink cartridge	tri-color	275	27.95	16.92	15.71	14.67
R-034	18C0032/34	Lexmark 34 ink cartridge - NEW!	blk high-capacity	475	24.95	18.46	17.14	16.00
R-035	18C0033/35	Lexmark 35 ink cartridge - NEW!	col high-capacity	450	28.95	20.00	18.57	17.33
R-050	12A1970/17G005C	Lexmark 50 and 70 ink cartridge	black	255	19.95	11.98	11.13	10.39
R-060	12A1980/17G006C	Lexmark 60 and 80 ink cartridge	tri-color	225	27.95	16.75	15.56	14.52

■ Non-stock item

800-228-6351

New Item ★

ITEM #	Alternate	DESCRIPTION	RETAIL	EACH	24	ONLINE
--------	-----------	-------------	--------	------	----	--------

www.branchdist.com

PRINTWERKS™ Inkjet

LEXMARK INK CARTRIDGES (continued)

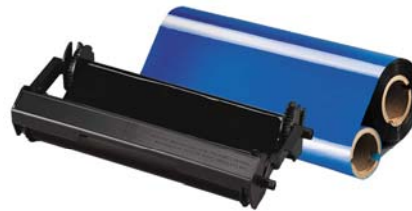
R-082	18L0032	Lexmark 82, Dell 7Y743 ink cartridge	black	600	23.95	14.00	13.00	12.13
R-083	18L0042	Lexmark 83, Dell 7Y745 ink cartridge	tri-color	450	25.95	15.31	14.21	13.27

PITNEY-BOWES

Yield

R-7659	765-9	Pitney-Bowes DM300c/400c/450c	fluorescent red	300	46.95	27.68	25.70	23.99
R-7690	769-0	Pitney-Bowes E700/707	fluorescent red	400	23.95	13.83	12.84	11.99
R-7935	793-5	Pitney-Bowes DM100i, DM200L, P700	fluorescent red	3000	3295.00	19.37	17.99	16.79
R-7970	797-0	Pitney-Bowes K700	fluorescent red	800	26.95	16.14	14.99	13.99

PRINTWERKS™ Thermal Fax Ribbons



BROTHER THERMAL FAX SUPPLIES

- R-PC92RF	PC-92RF	Brother PPF-900/950M/980M/1500M	2 refills/box	9.98	5.99	Close-Out	5.99
R-PC201	PC-201	Brother MFC-1770/1870, PPF-1170/1270	print cartridge	22.90	13.74	13.09	13.09
R-PC202RF	PC-202RF	Brother MFC-1770/1870, PPF-1170/1270	2 refills/box	26.33	15.80	15.05	15.05
R-PC301	PC-301	Brother MFC-970MC, PPF-750/770	print cartridge	14.13	8.48	8.08	8.08
R-PC302RF	PC-302RF	Brother MFC-970MC, PPF-750/770	2 refills/box	20.83	12.50	11.90	11.90
R-PC401	PC-401	Brother Fax 560/580MC/660MC	print cartridge	13.23	7.94	7.56	7.56
R-PC402RF	PC-402RF	Brother Fax 560/580MC/660MC	2 refills/box	12.63	7.58	7.22	7.22

PANASONIC THERMAL FAX SUPPLIES

R-KXFA55	KX-FA55	Panasonic KX-FP80/81/85/86/151/155	2 refills/box	20.63	12.38	11.79	11.79
R-KXFA65	KX-FA65	Panasonic KX-FHD301, KX-FP101/105	print cartridge	20.20	12.12	11.54	11.54
R-KXFA92	KX-FA92	Panasonic KX-FPG376/377/381	2 refills/box	15.00	9.00	8.57	8.57
R-KXFA93	KX-FA93	Panasonic KX-FHD331/332/351	1 refill ribbon	13.33	8.00	7.62	7.62
R-KXFA136	KXF-A136	Panasonic KX-FM205/210/220/255	2 refill ribbons	26.33	15.80	15.05	15.05

SHARP THERMAL FAX SUPPLIES

R-UX3CR	FO-3CR	Sharp FO-90X/730/760/775L/780/880/9000	2 refills/box	9.57	5.74	5.47	5.47
	UX-3CR	Sharp UX-300/305/330/340L/345L/355LR/460/470/755L					
R-UX5CR	UX-5CR	Sharp UXP100/200, UX-A255, UX-CL220	2 refills/box*	13.87	8.32	7.92	7.92
R-UX15CR	FO-15CR	Sharp FO-1450/1460/1650/1660M/1850	2 refills/box*	27.07	16.24	15.47	15.47
	UX-15CR	Sharp UX-500/510/600M/1000/1100/1300/1400					

* OEM version is packed ONE refill ribbon per box; PrintWerks is TWO per box. For an accurate price comparison, divide PrintWerks price in half.

ITEM #	Alternate	DESCRIPTION	RETAIL	EACH	24	ONLINE
--------	-----------	-------------	--------	------	----	--------

www.branchdist.com

PRINTWERKS™

Fax and Laser Toner



MAIL SLOT feature on the back of the box is a simple way to upgrade the sale and cross-sell by inserting your own flyer, stuffer or price list!



BROTHER

ITEM #	Alternate	DESCRIPTION		Yield	RETAIL	EACH	24	ONLINE
■ R-DR250	DR250	Brother DR-250 (use with TN-250)	drum	12000	89.35	62.55	59.30	
	DR350	Brother DR-350 (use with TN-350)	drum	12000	83.54	58.48	55.44	
■ R-DR400	DR400	Brother DR-400 (use with TN-430/460)	drum	20000	74.81	52.37	49.65	
■ R-DR500	DR500	Brother DR-500 (use with TN-530/560)	drum	20000	99.67	69.77	66.14	
■ R-DR510	DR510	Brother DR-510 (use with TN-540/570)	drum	20000	121.10	84.77	80.36	
■ R-DR520	DR520	Brother DR-520 (use with TN-550/580)	drum	25000	128.38	89.86	85.19	
	TN250/5000	Brother TN-200/250/300/5000 compatible	black toner	2200	23.29	11.97	11.17	
	TN350	Brother TN-350 compatible	black toner	2500	56.51	39.56	36.92	
	TN360	Brother TN-330/360 compatible	black toner	2600	60.92	42.64	39.80	
	TN460	Brother TN-430/460 high-yield compatible	black toner	6000	42.73	29.91	27.92	
■ R-TN560	TN-560/530	Brother TN-530/560 high-yield compatible	black toner	6700	49.14	34.40	32.11	
■ R-TN570	TN-570/540	Brother TN-540/570 high-yield compatible	black toner	6700	45.06	31.54	29.44	
	TN580/550	Brother TN-550/580 high-yield compatible	black toner	7000	58.31	40.81	38.09	
■ R-TN670	TN-670	Brother TN-670 compatible	black toner	7500	87.57	61.30	57.21	
■ R-TN115B	TN-110/115B	Brother TN-110/115 high-yield compatible	black toner	5000	120.41	84.29	78.67	
■ R-TN115C	TN-110/115C	Brother TN-110/115 high-yield compatible	cyan toner	4000	116.33	81.43	76.00	
■ R-TN115M	TN-110/115M	Brother TN-110/115 high-yield compatible	magenta toner	4000	116.33	81.43	76.00	
■ R-TN115Y	TN-110/115Y	Brother TN-110/115 high-yield compatible	yellow toner	4000	116.33	81.43	76.00	

CANON

ITEM #	Alternate	DESCRIPTION		Yield	RETAIL	EACH	24	ONLINE
■ R-C104	0263B001AA	Canon C104, ImageClass MF4150/4350	black toner	2000	65.12	39.07	36.47	★
■ R-C106	0264B001AA	Canon C106, ImageClass MF6530/6580	black toner	5000	129.06	90.34	85.65	
	E40	Canon PC 300400/500/700/900	black toner	4000	93.65	60.87	56.00	
■ R-FX3	1557A002BA	Canon FX-3 L300, 4500, Multipass L90	black toner	2700	49.18	34.42	32.64	
■ R-FX4	1558A002AA	Canon FX-4 L800/900, 8500/9000/9500	black toner	4000	47.73	33.41	31.68	
■ R-FX6	1559A002AA	Canon FX-6 LaserClass 3170/3175	black toner	5000	56.99	39.89	37.82	
■ R-FX7	7621A001AA	Canon FX-7 L2000, LaserClass 710/720/730	black toner	4500	49.08	34.36	32.57	
■ R-FX8	8955A001AA	Canon FX-8 (S35), LaserClass 510	black toner	3500	72.42	47.98	44.56	
	L50	Canon D660/661/680/760/780 (L50)	black toner	5000	86.96	56.52	52.00	
■ R-S35	7833A001AA	Canon S-25 ImageClass D320/340	black toner	3500	61.04	42.73	40.51	
■ R-X25	8982A002AA	Canon X-25 LaserClass MF3110	black toner	2500	54.79	38.36	36.36	

DELL

ITEM #	Alternate	DESCRIPTION		Yield	RETAIL	EACH	24	ONLINE
■ R-GC502	310-6640	Dell 1100 universal (NOT for 1125)	black toner	2000	50.27	32.68	30.34	
■ R-R0893	310-3545	Dell P1500	black toner	6000	101.14	65.74	61.04	
■ R-X5015	310-5417	Dell 1600N	black toner	5000	93.91	65.74	62.32	
	310-5400	Dell 1700, 1700n, 1710, 1710n	black toner	6000	93.93	65.75	62.34	
	310-8709	Dell 1720, 1720dn	black toner	6000	103.72	72.60	68.83	
■ R-PF658	310-7945	Dell 1815dn	black toner	5000	109.16	76.41	72.44	
■ R-R0887	310-3547	Dell S2500, S2500n	black toner	10000	137.05	95.93	90.95	
■ R-K5372	310-5726	Dell 3000cn/3100cn color printer	black toner	4000	66.69	46.68	44.26	

■ Non-stock item

800-228-6351

New Item ★

ITEM #	Alternate	DESCRIPTION	RETAIL	EACH	24	ONLINE
--------	-----------	-------------	--------	------	----	--------

www.branchdist.com

PRINTWERKS™ Toner

DELL (continued)

■ R-G7028	310-5739	Dell 3000cn/3100cn color printer	cyan toner	2000	85.64	59.95	56.83
■ R-G7030	310-5738	Dell 3000cn/3100cn color printer	magenta toner	2000	85.64	59.95	56.83
■ R-G7029	310-5737	Dell 3000cn/3100cn color printer	yellow toner	2000	85.64	59.95	56.83
■ R-XG721	310-8092	Dell 3110cn/3115cn color printer	black toner	8000	182.00	127.40	120.78
■ R-XG722	310-8094	Dell 3110cn/3115cn color printer	cyan toner	8000	225.05	157.53	149.35
■ R-XG723	310-8096	Dell 3110cn/3115cn color printer	magenta toner	8000	225.05	157.53	149.35
■ R-XG724	310-8098	Dell 3110cn/3115cn color printer	yellow toner	8000	225.05	157.53	149.35
■ R-H7028	310-5807	Dell C5100cn color printer	black toner	9000	86.30	60.41	57.27
■ R-H7029	310-5810	Dell C5100cn color printer	cyan toner	8000	150.39	105.27	99.81
■ R-H7030	310-5809	Dell C5100cn color printer	magenta toner	8000	150.39	105.27	99.81
■ R-H7031	310-5808	Dell C5100cn color printer	yellow toner	8000	150.39	105.27	99.81
■ R-X2046	310-4131	Dell M5200n high yield	black toner	21000	125.81	88.07	83.49
■ R-KD580	310-7890	Dell C5110cn color printer	black toner	10000	90.02	63.01	59.74
■ R-JD762	310-7892	Dell C5110cn color printer	cyan toner	8000	166.34	116.44	110.39
■ R-JD761	310-7894	Dell C5110cn color printer	magenta toner	8000	166.34	116.44	110.39
■ R-GD918	310-7896	Dell C5110cn color printer	yellow toner	8000	166.34	116.44	110.39
■ R-UG219	341-2919	Dell 5210n high yield	black toner	21000	146.77	102.74	97.40
■ R-UG219	310-7237	Dell 5310n high yield	black toner	21000	146.77	102.74	97.40
■ R-UG220	310-7238	Dell 5310n ultra high yield	black toner	32000	162.43	113.70	107.79
■ R-C3044	310-4585	Dell W5300	black toner	32000	136.83	95.78	90.81

DELL MICR - Please contact us for price and availability

HEWLETT PACKARD

Yield

■ R-92295A	92295A	HP LaserJet II, IID, III, IIID	black toner	4000	48.22	33.75	32.00
■ R-92298A	92298A	HP LaserJet 4/4+/4M/5/5M/5N	black toner	6800	53.63	37.54	34.86
■ R-92298X	92298X	HP LaserJet 4/4+/4M/5/5M/5N high yield	black toner	8800	55.54	38.88	36.10
■ R-C3906A	C3906A	HP LaserJet 5L, 6L, 6Lse, 6Lxi	black toner	2500	53.23	37.26	34.60
■ R-C3903A	C3903A	HP LaserJet 5P, 5MP, 6P, 6MP	black toner	4000	48.96	34.27	32.49
■ R-C3909A	C3909A	HP LaserJet 5Si	black toner	15000	93.05	65.14	61.75
■ R-C3909X	C3909X	HP LaserJet 5Si high yield	black toner	17000	95.50	66.85	63.38
■ R-C7115A	C7115A	HP LaserJet 1000/1200/1220/3300	black toner	2500	54.04	35.12	32.61
■ R-C7115X	C7115X	HP LaserJet 1200/1220/3300/3380	black toner	3500	59.15	38.45	35.70
■ R-Q2612A	Q2612A	HP LaserJet 1010, 1012, 1015, 1020, 3015	black toner	2000	60.68	42.48	39.44
■ R-C4092A	C4092A	HP LaserJet 1100, 1100A, 3200	black toner	2500	48.02	33.62	31.87
■ R-Q2624A	Q2624A	HP LaserJet 1150 series	black toner	2500	47.53	33.27	31.55
■ R-Q2624X	Q2624X	HP LaserJet 1150 series	black toner	4000	60.06	42.04	39.86
■ R-Q5949A	Q5949A	HP LaserJet 1160, 1320	black toner	2500	69.99	45.49	42.24
■ R-Q5949X	Q5949X	HP LaserJet 1320 only (NOT for 1160)	black toner	6000	93.89	65.72	61.03
■ R-Q2613A	Q2613A	HP LaserJet 1300 series	black toner	3000	54.09	37.86	35.90
■ R-Q2613X	Q2613X	HP LaserJet 1300 series	black toner	4000	68.90	48.23	44.79
■ R-Q9700A	C9700A	HP Color LaserJet 1500 series	black toner	5000	94.58	66.21	62.77
■ R-Q9701A	C9701A	HP Color LaserJet 1500 series	cyan toner	4000	113.87	79.71	75.57
■ R-Q9702A	C9702A	HP Color LaserJet 1500 series	yellow toner	4000	113.87	79.71	75.57

■ Non-stock item

800-228-6351

New Item ★

ITEM #	Alternate	DESCRIPTION	RETAIL	EACH	24	ONLINE
--------	-----------	-------------	--------	------	----	--------

www.branchdist.com

PRINTWERKS™ Toner

HEWLETT PACKARD (continued)

Yield

■ R-Q9703A	C9703A	HP Color LaserJet 1500 series	magenta toner	4000	113.87	79.71	75.57
■ R-C4096A	C4096A	HP LaserJet 2100/2200 series	black toner	5000	58.13	37.78	35.09
■ R-Q2610A	Q2610A	HP LaserJet 2300 series	black toner	6000	67.20	47.04	44.60
■ R-Q6511A	Q6511A	HP LaserJet 2400/2420/2430	black toner	6000	83.70	58.59	55.55
■ R-Q6511X	Q6511X	HP LaserJet 2400/2420/2430	black toner	12000	101.10	70.77	67.09
■ R-Q3960A	Q3960A	HP Color LaserJet 2500, 2550, 2820, 2840	black toner	5000	94.58	66.21	62.77
■ R-Q3961A	Q3961A	HP Color LaserJet 2500, 2550, 2820, 2840	cyan toner	4000	113.87	79.71	75.57
■ R-Q3962A	Q3962A	HP Color LaserJet 2500, 2550, 2820, 2840	yellow toner	4000	113.87	79.71	75.57
■ R-Q3963A	Q3963A	HP Color LaserJet 2500, 2550, 2820, 2840	magenta toner	4000	113.87	79.71	75.57
■ R-Q7650A	Q7650A	HP Color LaserJet 3000 series	black toner	6500	132.95	93.07	90.59
■ R-Q7561A	Q7561A	HP Color LaserJet 3000 series	cyan toner	3500	127.14	89.00	86.63
■ R-Q7562A	Q7562A	HP Color LaserJet 3000 series	magenta toner	3500	127.14	89.00	86.63
■ R-Q7563A	Q7563A	HP Color LaserJet 3000 series	yellow toner	3500	127.14	89.00	86.63
■ R-C2670A	C2670A	HP LaserJet 3500, 3550 series	black toner	6000	116.44	81.51	79.33
■ R-C2671A	C2671A	HP LaserJet 3500, 3550 series	cyan toner	4000	129.57	90.70	88.28
■ R-C2672A	C2672A	HP LaserJet 3500, 3550 series	yellow toner	4000	129.57	90.70	88.28
■ R-C2673A	C2673A	HP LaserJet 3500, 3550 series	magenta toner	4000	129.57	90.70	88.28
■ R-Q6470A	Q6470A	HP LaserJet 3600 series	black toner	6000	107.63	75.34	73.33
■ R-Q6471A	Q6471A	HP LaserJet 3600 series	cyan toner	4000	127.14	89.00	86.63
■ R-Q6472A	Q6462A	HP LaserJet 3600 series	yellow toner	4000	127.14	89.00	86.63
■ R-Q7473A	Q6473A	HP LaserJet 3600 series	magenta toner	4000	127.14	89.00	86.63
■ R-Q2680A	Q2680A	HP LaserJet 3700 series	black toner	6000	116.44	81.51	79.33
■ R-Q2681A	Q2681A	HP LaserJet 3700 series	cyan toner	4000	142.49	99.74	97.08
■ R-Q2682A	Q2682A	HP LaserJet 3700 series	yellow toner	4000	142.49	99.74	97.08
■ R-Q2883A	Q2683A	HP LaserJet 3700 series	magenta toner	4000	142.49	99.74	97.08
■ R-Q6470A	Q6470A	HP LaserJet 3800 series	black toner	6000	107.63	75.34	73.33
■ R-Q7581A	Q7581A	HP LaserJet 3800 series	cyan toner	4000	137.32	96.12	93.56
■ R-Q7582A	Q7582A	HP LaserJet 3800 series	yellow toner	4000	137.32	96.12	93.56
■ R-Q7583A	Q7583A	HP LaserJet 3800 series	magenta toner	4000	137.32	96.12	93.56
■ R-C4127A	C4127A	HP LaserJet 4000, 4050 series	black toner	6000	49.30	34.51	33.59
■ R-C4127X	C4127X	HP LaserJet 4000, 4050 high yield	black toner	10000	57.16	40.01	37.35
■ R-C8061X	C8061X	HP LaserJet 4100 series w/ CHIP	black toner	10000	61.82	43.27	42.12
■ R-CC364A	CC364A	HP LaserJet 4014/4015/4515	black toner	10000	146.77	102.74	100.00
■ R-CC364A	CC364X	HP LaserJet 4014/4015/4515 high-yield	black toner	24000	176.13	123.29	120.00
■ R-Q1338U	Q1338X	HP LaserJet 4200 universal cartridge	black toner	20000	113.78	79.64	74.33
■ R-Q1338U	Q5942A, Q5942X	HP LaserJet 4250/4350 universal	black toner	20000	113.78	79.64	74.33
■ R-Q1338U	Q1339A	HP LaserJet 4300 universal cartridge	black toner	20000	113.78	79.64	74.33
■ R-Q1338U	Q5945A	HP LaserJet 4345mfp universal cartridge	black toner	20000	113.78	79.64	74.33
■ R-C4191A	C4191A	HP Color LaserJet 4500, 4550 series	black toner	9000	55.62	38.93	37.89
■ R-C4192A	C4192A	HP Color LaserJet 4500, 4550 series	cyan toner	6000	74.36	52.05	50.67
■ R-C4193A	C4193A	HP Color LaserJet 4500, 4550 series	magenta toner	6000	74.36	52.05	50.67
■ R-C4194A	C4194A	HP Color LaserJet 4500, 4550 series	yellow toner	6000	74.36	52.05	50.67
■ R-C9720A	C9720A	HP Color LaserJet 4600, 4650 series	black toner	9000	119.94	83.96	79.60
■ R-C9721A	C9721A	HP Color LaserJet 4600, 4650 series	cyan toner	8000	119.94	83.96	79.60
■ R-C9722A	C9722A	HP Color LaserJet 4600, 4650 series	yellow toner	8000	119.94	83.96	79.60
■ R-C9723A	C9723A	HP Color LaserJet 4600, 4650 series	magenta toner	8000	119.94	83.96	79.60

■ Non-stock item

800-228-6351

New Item ★

ITEM #	Alternate	DESCRIPTION	RETAIL	EACH	24	ONLINE
--------	-----------	-------------	--------	------	----	--------

www.branchdist.com

PRINTWERKS™ Toner

HEWLETT PACKARD (continued)

Yield

■ R-C9723A	C9723A	HP Color LaserJet 4600, 4650 series	magenta toner	8000	119.94	83.96	79.60
■ R-Q5950A	Q5950A	HP Color LaserJet 4700 series	black toner	11000	164.38	115.07	109.09
■ R-Q5951A	Q5951A	HP Color LaserJet 4700 series	cyan toner	10000	164.38	115.07	109.09
■ R-Q5952A	Q5952A	HP Color LaserJet 4700 series	yellow toner	10000	164.38	115.07	109.09
■ R-C5953A	Q5953A	HP Color LaserJet 4700 series	magenta toner	10000	164.38	115.07	109.09
■ R-Q6460	Q6460A	HP Color LaserJet 4730mfp series	black toner	12000	185.91	130.14	123.38
■ R-Q6461A	Q6461A	HP Color LaserJet 4730mfp series	cyan toner	12000	193.74	135.62	128.57
■ R-Q6462A	Q6462A	HP Color LaserJet 4730mfp series	yellow toner	12000	193.74	135.62	128.57
■ R-Q6463A	Q6463A	HP Color LaserJet 4730mfp series	magenta toner	12000	193.74	135.62	128.57
■ R-C4129X	C4129X	HP LaserJet 5000, 5100 series	black toner	10000	81.08	56.75	53.81
■ R-C4182X	C4182X	HP LaserJet 8100, 8150, Mopier 320	black toner	20000	95.75	67.03	63.55
■ R-C8543X	C8543X	HP LaserJet 9000, 9050 w/ CHIP	black toner	30000	183.95	128.77	122.08
■ R-CB435A	CB435A	HP LaserJet P1005, P1006	black toner	2000	74.36	52.05	49.35
■ R-CB436A	CB436A	HP LaserJet P1505, M1522	black toner	2000	82.19	57.53	54.55
■ R-Q7553X	Q7553X	HP LaserJet P2015 series high yield	black toner	7000	98.27	68.79	64.20
■ R-CC530A	CC530A	HP LaserJet CM2320, CP2025	black toner	3500	132.65	92.86	86.67
■ R-CC531A	CC531A	HP LaserJet CM2320, CP2025	cyan toner	2800	132.65	92.86	86.67
■ R-CC532A	CC532A	HP LaserJet CM2320, CP2025	yellow toner	2800	132.65	92.86	86.67
■ R-CC533A	CC533A	HP LaserJet CM2320, CP2025	magenta toner	2800	132.65	92.86	86.67
■ R-CE278A	CE278A	HP LaserJet PRO P1606	black toner	2100	69.69	48.79	45.53
■ R-CE285A	CE285A	HP LaserJet PRO M1130, P1102	black toner	1600	65.31	45.71	42.67
■ R-CE505A	CE505A	HP LaserJet P2035	black toner	2300	95.89	67.12	63.64
■ R-CE505X	CE505X	HP LaserJet P2035 high yield	black toner	6500	125.24	87.67	83.12
■ R-Q7551A	Q7551A	HP LaserJet P3005 series	black toner	6500	83.98	58.79	54.87
■ R-Q7551X	Q7551X	HP LaserJet P3005 series high yield	black toner	13000	112.76	78.93	73.67
■ R-CB400A	CB400A	HP LaserJet CP4005 series	black toner	7500	148.73	104.11	98.70
■ R-CB401A	CB401A	HP LaserJet CP4005 series	cyan toner	7500	148.73	104.11	98.70
■ R-CB402A	CB402A	HP LaserJet CP4005 series	yellow toner	7500	148.73	104.11	98.70
■ R-CB403A	CB403A	HP LaserJet CP4005 series	magenta toner	7500	148.73	104.11	98.70

★

★

HEWLETT PACKARD MICR

Yield

■ R-C3903M	C3903A	HP LaserJet 5P, 6P Series	magnetic toner	4000	62.52	43.77	41.49
■ R-C3906M	C3906A	HP LaserJet 5L, 6L, 3100, 3150 Series	magnetic toner	2500	57.77	40.44	38.34
■ R-C3909M	C3909A	HP LaserJet 5Si	magnetic toner	15000	174.68	122.27	115.92
■ R-C7115M	C7115A	HP LaserJet 1000, 1200, 1220, 3300	magnetic toner	2500	63.89	44.73	42.40
■ R-Q2612M	Q2612A	HP LaserJet 1010, 1012, 1015, 3015	magnetic toner	2000	79.35	55.55	52.66
■ R-C4092M	C4092A	HP LaserJet 1100, 3200 Series	magnetic toner	2500	58.61	41.03	38.90
■ R-Q2624M	Q2624A	HP LaserJet 1150 series	magnetic toner	2500	82.27	57.59	54.60
■ R-Q2624XM	Q2624A	HP LaserJet 1150 series high yield	magnetic toner	4000	87.42	61.19	58.01
■ R-Q5949M	Q5949A	HP LaserJet 1160/1320	magnetic toner	2500	76.54	53.58	50.79
■ R-Q5949XM	Q5949A	HP LaserJet 1320 high yield	magnetic toner	6000	104.87	73.41	69.60
■ R-Q2613XM	Q2613A	HP LaserJet 1300 series high yield	magnetic toner	4000	86.05	60.23	57.10
■ R-C4096M	C4096A	HP LaserJet 2100, 2200 Series	magnetic toner	5000	84.50	59.15	56.08
■ R-Q2610M	Q2610A	HP LaserJet 2300 series	magnetic toner	6000	109.71	76.79	72.81
■ R-Q6511M	Q6511A	HP LaserJet 2400/2420/2430s	magnetic toner	6000	132.05	92.44	87.64

■ Non-stock item

800-228-6351

New Item ★

ITEM #	Alternate	DESCRIPTION	RETAIL	EACH	24	ONLINE
--------	-----------	-------------	--------	------	----	--------

www.branchdist.com

PRINTWERKS™ Toner

HEWLETT PACKARD MICR (continued)

Yield

■ R-Q6511XM	Q6511A	HP LaserJet 2400/2420/2430s high yield	magnetic toner	12000	171.53	120.07	113.83
■ R-C4127XM	C4127X	HP LaserJet 4000, 4050 Series	magnetic toner	10000	104.68	73.27	69.47
■ R-CC364M	CC364A	HP LaserJet 4014/4015/4515	magnetic toner	10000	185.91	130.14	126.67
■ R-CC364XM	CC364X	HP LaserJet 4014/4015/4515 high yield	magnetic toner	24000	225.05	157.53	153.33
■ R-C8061XM	C8061X	HP LaserJet 4100 series high yield	magnetic toner	10000	119.73	83.81	79.45
■ R-Q1338M	Q1338A	HP LaserJet 4200 series	magnetic toner	12000	162.43	113.70	107.79
■ R-Q5942M	Q5942A	HP LaserJet 4250/4350	magnetic toner	10000	140.47	98.33	93.22
■ R-Q5942XM	Q5942X	HP LaserJet 4240/4250/4350	magnetic toner	20000	198.38	138.86	131.65
■ R-Q1339M	Q1339A	HP LaserJet 4300 series	magnetic toner	18000	192.21	134.55	127.56
■ R-Q5945M	Q5945A	HP LaserJet 4345mfp	magnetic toner	20000	224.27	156.99	146.52
■ R-C4129XM	C4129X	HP LaserJet 5000, 5100 high yield	magnetic toner	10000	151.88	106.32	100.79
■ R-C3909M	C3909A	HP LaserJet 8000, 8050	magnetic toner	15000	174.68	122.27	115.92
■ R-C4182M	C4182X	HP LaserJet 8100, 8150, Mopier 320	magnetic toner	20000	159.65	111.75	105.95
■ R-C8543XM	C8543X	HP LaserJet 9000, 9050 high yield	magnetic toner	30000	445.26	311.68	295.49
■ R-CB435M	CB435A	HP LaserJet P1005, P1006	magnetic toner	2000	109.59	76.71	72.73
■ R-CB436M	CB436A	HP LaserJet P1505, M1522	magnetic toner	2000	113.50	79.45	75.32
■ R-Q7553M	Q7553A	HP LaserJet P2015 series	magnetic toner	3000	105.07	73.55	69.73
■ R-Q7553XM	Q7553X	HP LaserJet P2015 series high yield	magnetic toner	7000	156.85	109.79	104.09
■ R-CE505M	CE505A	HP LaserJet P2035/2055	magnetic toner	2300	135.03	94.52	89.61
■ R-CE505XM	CE505X	HP LaserJet P2055 high yield	magnetic toner	6500	176.13	123.29	116.88
■ R-Q7551M	Q7551A	HP LaserJet P3005 series	magnetic toner	6500	126.47	88.53	82.63
■ R-Q7551XM	Q7551X	HP LaserJet P3005 series high yield	magnetic toner	13000	171.37	119.96	111.96

HP MAINTENANCE KITS and FUSING ASSEMBLIES - Pleasere contact us for pricing and availability

LEXMARK

Yield

■ R-12A35SA	12A35SA	Lexmark E120	black toner	2000	72.41	50.68	48.05
■ R-10S0300	10S0300	Lexmark E220	black toner	2500	82.49	57.74	54.74
■ R-12A8300	12A8300	Lexmark E232, E234	black toner	6000	104.23	72.96	69.17
■ R-E250A21A	E250A21A	Lexmark E250	black toner	3500	107.63	75.34	71.43
■ R-08A0478	08A0478	Lexmark E320, E322	black toner	6000	92.47	64.73	61.36
■ R-12A7405	12A7405	Lexmark E321, E323	black toner	6000	88.63	62.04	58.82
■ R-12A8405	12A8405	Lexmark E330, E332	black toner	6000	104.23	72.96	69.17
■ R-E352H21A	E352H21A	Lexmark E350, E352	black toner	9000	134.05	93.84	88.96
■ R-E450H11A	E450H11A	Lexmark E450	black toner	11000	114.48	80.14	75.97
■ R-69G8256	69G8256	Lexmark Optra E, EP, E+, 4026	black toner	3000	43.91	30.74	29.14
■ R-10S0150	10S0150	Lexmark Optra E210	black toner	2000	65.69	45.99	43.60
■ R-13T0101	13T0101	Lexmark Optra E310, E312	black toner	6000	80.88	56.62	53.68
■ R-17G0154	17G0154	Lexmark Optra M 410, 412	black toner	15000	94.13	65.89	62.47
■ R-1382925	1382925	Lexmark Optra S series	black toner	17600	124.85	87.40	82.86
■ R-12A0825	12A0825	Lexmark Optra Se 3455	black toner	23000	141.19	98.84	93.70
■ R-12A5845	12A5845	Lexmark Optra T600 Series	black toner	25000	137.75	96.42	91.42
■ R-12A7415	12A7415	Lexmark T420	black toner	10000	141.47	99.03	93.88
■ R-12A8425	12A8425	Lexmark T430	black toner	12000	156.56	109.59	103.90

■ Non-stock item

800-228-6351

New Item ★

ITEM #	Alternate	DESCRIPTION	RETAIL	EACH	24	ONLINE
--------	-----------	-------------	--------	------	----	--------

www.branchdist.com

PRINTWERKS™ Toner

LEXMARK (continued)

Yield

■ R-12A6835	12A6835	Lexmark T520, 522	black toner	20000	144.60	101.22	95.96
■ R-12A6865	12A6865	Lexmark T620, 622	black toner	30000	140.47	98.33	93.22
■ R-12A7462	12A7462	Lexmark T630, T632, T634	black toner	21000	130.00	91.00	86.27
■ R-12A7465	12A7465	Lexmark T632, T634	black toner	32000	151.17	105.82	100.32
■ R-64015HA	64015HA	Lexmark T640, T642, T644	black toner	21000	172.37	120.66	114.39
■ R-64415XA	64415XA	Lexmark T644	black toner	32000	184.46	129.12	122.42

LEXMARK MICR - Please contact us for pricing and availability

LEXMARK MAINTENANCE KITS and FUSING ASSEMBLIES - Please contact us for pricing and availability

SAMSUNG

Yield

■ R-ML1610	ML-1610	Samsung ML 1610	black toner	3000	41.96	29.37	27.84
■ R-ML1710	ML-1710D3	Samsung ML 1710, 1740, 1750	black toner	3000	94.76	66.33	62.88
■ R-ML2010	ML-2010D3	Samsung ML 2010	black toner	3000	41.96	29.37	27.84
■ R-ML2250	ML-2250D5	Samsung ML 2250/2251/2252	black toner	5000	99.55	69.68	66.06
■ R-ML2510	ML-2510D3	Samsung ML 2510	black toner	3000	41.96	29.37	27.84
■ R-ML2570	ML-2570D3	Samsung ML 2570	black toner	3000	41.96	29.37	27.84
■ R-SCX4521	SCX-4521D3	Samsung SCX 4321/4521	black toner	3000	41.96	29.37	27.84
■ R-SCX4720	SCX-4720D5	Samsung SCX 4520/4720	black toner	5000	99.55	69.68	66.06

SHARP

Yield

■ R-AL100TD	AL100TD	Sharp AL 1000/1200	toner/developer	6000	148.73	104.11	97.17
■ R-FO45ND	FO-45ND	Sharp FO-4500, 5500, 6500, 7500	black toner	5600	44.50	31.15	29.53
■ R-FO47ND	FO-47ND	Sharp FO-4650, 4700, 5700, 6700	black toner	6000	64.83	45.38	43.03
■ R-FO50ND	FO-50ND	Sharp FO-4400, DC500, DC600	black toner	6000	64.83	45.38	43.03

XEROX

Yield

■ R-013R548	013R548	Xerox DocuPrint P12	black toner	6000	73.39	51.37	48.70
■ R-113R95	113R95	Xerox DocuPrint N17, 4517	black toner	7000	139.43	97.60	92.53
■ R-106R01033	106R01033	Xerox Phaser 3420	black toner	5000	99.55	69.68	66.06
■ R-113R657	113R657	Xerox Phaser 4500	black toner	18000	162.88	114.01	108.09
■ R-109R00725	109R00725	Xerox Phaser 3130 series	black toner	3000	89.82	62.88	59.61
■ R-106R00688	106R00688	Xerox Phaser 3450 series	black toner	10000	144.62	101.23	95.97
■ R-113R628	113R628	Xerox Phaser 4400 series	black toner	15000	168.10	117.67	111.56
■ R-113R657	113R657	Xerox Phaser 4500 series	black toner	18000	234.64	164.25	155.71
■ R-106R00652	106R00652	Xerox Phaser 7750	black toner	32000	287.67	201.37	190.91
■ R-106R00653	106R00653	Xerox Phaser 7750	cyan toner	22000	287.67	201.37	190.91
■ R-106R00654	106R00654	Xerox Phaser 7750	magenta toner	32000	287.67	201.37	190.91
■ R-106R00655	106R00655	Xerox Phaser 7750	yellow toner	32000	287.67	201.37	190.91

Note: Xerox Phaser Solid Ink ColorStix (Phaser Models 840, 850, 860, 8200, 8400, 8500/8550, 8560)

Call for price and availability -

ITEM #	Alternate	DESCRIPTION	RETAIL	EACH	24	ONLINE
--------	-----------	-------------	--------	------	----	--------

www.branchdist.com

PRINTWERKS™ Ribbons

COMPUTER, TYPING RIBBONS

N410		Okidata Pacemark 3410, ML393	nylon black		18.75	11.25	10.00	9.00
N436		Okidata ML-182/320/321/380/390/391	nylon black	min 6	4.20	2.48	2.20	1.98
■ N559		DEC LA30/36, Texas Instruments 880	nylon black	min 6	4.95	2.97	2.81	
■ N634		Epson FX/MX/RX-80	nylon black	min 6	5.40	3.24	2.88	2.59
N790		Okidata ML420/490/491/720/790/791	nylon black	min 6	5.75	3.43	3.04	2.74

Also see GRC ribbons, pages 5-6

FINANCIAL and P.O.S. RIBBONS and INK ROLLERS

IR-90		IR-90/91/92 cash register ink roller	ink roller purple		8.35	5.00	4.62	4.29
IR-93		IR-93 cash register ink roller	ink roller purple		6.90	4.17	3.85	3.57
N203BR	<i>New!</i>	Universal calculator spool, C-wind	black/red	min 12	2.95	0.89	0.79	0.79 ★
N282P		Epson ERC-09/40 blister-carded	nylon purple	min 5	3.25	1.95	1.73	1.56
N318P		Axiohm A470, DH Print 4410/4799 ser	nylon purple	min 6	5.75	3.43	3.04	2.74
■ N321P		Epson ERC-03	nylon purple	min 6	3.90	2.34	2.08	
■ N390P		Epson ERC-18	nylon purple	min 6	5.30	3.18	2.82	
N463P		Epson ERC-27	nylon purple	min 6	4.20	2.50	2.22	2.00
N465BR		Epson ERC-23	nylon blk/red	min 6	3.60	2.15	1.91	1.72
■ N465P		Epson ERC-23	nylon purple	min 6	3.60	2.15	1.91	
N486BR		Epson ERC-30/34/38	nylon blk/red	min 6	5.00	3.00	2.67	2.40
N486P		Epson ERC-30/34/38	nylon purple	min 6	5.00	3.00	2.67	2.40
N490P		Star Micronics SP-300	nylon purple	min 6	5.25	3.13	2.78	2.50
N583P		Epson ERC-31	nylon purple	min 6	5.85	3.50	3.11	2.80
■ N700BR		Citizen DP-700/730 (IR-71)	nylon blk/red	min 6	6.50	3.90	3.47	
■ N700BR		Sharp ER-A440/450/460/470	nylon blk/red	min 6	6.50	3.90	3.47	
N712BR		Star Micronics SP-700/712/742	nylon blk/red	min 6	5.85	3.50	3.11	2.80
■ N721BR		Citizen IDP-562 (IR51)	nylon blk/red	min 6	4.20	2.50	2.22	
N735P		Epson ERC-32	nylon purple	min 6	5.45	3.25	2.89	2.60
N755BR		Star Micronics SP-200	nylon blk/red	min 6	4.20	2.50	2.22	2.00
N755P		Star Micronics SP-200	nylon purple	min 6	4.20	2.50	2.22	2.00
N768P		Epson ERC-37, Royal Alpha 9150	nylon purple	min 6	5.30	3.18	2.82	2.54
N787P		TEC MA-1450/1460	nylon black	min 6	5.25	3.13	2.78	2.50

Note: TEC MA-1450 "Slip Printer" is #N463P, ERC-27

N3000		Amano PIX 3000 time clock ribbon	nylon black		9.45	5.65	5.02	4.52
-------	--	----------------------------------	-------------	--	------	------	------	------

Also see GRC ribbons and ink rollers, pages 5-6



Can't find it? Check the PRODUCT INDEX for a complete list of "what-fits-what".
Still can't find it? Try our BRANCH-OUT program and let us find it for you - fast!

ITEM #	Alternate	DESCRIPTION		RETAIL	EACH	24	ONLINE
						www.branchdist.com	
RITEMADE Paper Rolls						ONLINE	
SINGLE-PLY ROLLS				Retail	Each	24 ctns	50 ctns
12-100		Single-ply bond, 2 1/4" x 150'	100 rolls, bulk	70.75	45.98	42.70	39.85
12-812		Single-ply bond, 2 1/4" x 150'	8 pkg of 12	73.92	48.05	44.61	41.64
13-304		Single-ply bond, 2 3/4" x 165'	50 rolls, bulk	47.31	30.75	28.56	26.65
44-104		Single-ply bond, 2 3/4" x 190'	50 rolls, bulk	71.72	46.62	43.29	40.40
CC-105		Single-ply bond, 3" x 95'	50 rolls, bulk	39.12	25.43	23.61	22.04
13-305		Single-ply bond, 3" x 165'	50 rolls, bulk	49.78	32.35	30.04	28.04
62-481		Single-ply bond, 3 1/4" x 165'	50 rolls, bulk	57.61	37.45	34.77	32.45
■ 13-450		Single-ply bond, 4 1/2" x 165'	50 rolls, bulk	105.16	68.35	63.47	59.24
CASH REGISTER ROLLS				Retail	Each	24 ctns	50 ctns
62-106		Register roll, 38 mm x 145'	10 pkg of 10	52.19	33.92	31.50	29.40
62-107		Register roll, 44 mm x 145'	10 pkg of 10	56.73	36.88	34.24	31.96
63-544		Register roll, 44 mm x 165'	50 rolls, bulk	38.98	25.34	23.53	21.96
MULTI-PLY CARBONLESS ROLLS				Retail	Each	24 ctns	50 ctns
18-232		2-ply w/c, 2 1/4" x 95'	50 rolls, bulk	66.70	43.35	40.26	37.57
45-150C		2-ply self-contained, 2 1/4" x 51'	50 rolls, bulk	72.66	47.23	43.86	40.93
■ CC-234		2-ply w/c, 2 3/4" x 90'	50 rolls, bulk	69.73	45.32	42.09	39.28
CC-235		2-ply w/c, 3" x 90'	50 rolls, bulk	71.79	46.66	43.33	40.44
65-264		2-ply w/c, 3 1/4" x 100'	50 rolls, bulk	94.13	61.18	56.81	53.03
THERMAL ROLLS				Retail	Each	24 ctns	50 ctns
14-960	ATM roll, 2" core	Black image thermal, 2 11/32" x 872'	8 rolls, bulk	64.95	42.22	39.20	36.59
15-038		Black image thermal, 38mm x 165'	50 rolls, bulk	76.33	49.62	46.07	43.00
15-044		Black image thermal, 44mm x 230'	50 rolls, bulk	72.19	46.92	43.57	40.67
15-148		Black image thermal, 2 1/4" x 132'	50 rolls, bulk	71.50	46.48	43.16	40.28
15-149		Black image thermal, 2 1/4" x 80'	50 rolls, bulk	33.70	21.91	20.34	18.99
216-149	BP-A FREE*	Black image thermal, 2 1/4" x 80'	50 rolls, bulk	36.36	23.63	21.94	20.48 ★
15-150		Black image thermal, 2 1/4" x 150'	24 rolls, bulk	41.25	26.82	24.90	23.24
15-151		Black image thermal, 2 1/4" x 200'	50 rolls, bulk	77.23	50.20	46.61	43.51
15-153		Black image thermal, 2 5/16" x 400'	12 rolls, bulk	48.00	31.20	28.97	27.04
15-155		Black image thermal, 2 1/4" x 150'	50 rolls, bulk	64.99	42.25	39.23	36.61
15-158		Black image thermal, 2 5/16" x 338' CSI	12 rolls, bulk	54.93	35.71	33.16	30.95
15-303		Black image thermal, 2 1/4" x 50'	48 rolls, bulk	37.30	24.25	22.51	21.01
46-015		Black image thermal, 3" x 230'	50 rolls, bulk	117.78	76.55	71.09	66.35
46-170		Black image thermal, 3 1/8" x 110'	50 rolls, bulk	74.06	48.14	44.70	41.72
54-220		Black image thermal, 3 1/8" x 220'	50 rolls, bulk	93.80	60.97	56.61	52.84
216-220	BP-A FREE*	Black image thermal, 3 1/8" x 220'	50 rolls, bulk	97.42	63.32	58.80	54.88 ★

* BP-A FREE is manufactured without Bisphenol-A for your customers that require this extra specification (216-220 and 54-220 are functionally interchangeable).

For more information about BP-A, please visit www.RiteMade.com and click on "Thermal Paper Safety Information".

**FREE FREIGHT on any order of 25 cartons of RiteMade, to most destinations in the contiguous U.S.
Call to see if your location qualifies. Call for special rates to Alaska and Hawaii**

ITEM #	Alternate	DESCRIPTION	RETAIL	EACH	24	ONLINE
--------	-----------	-------------	--------	------	----	--------

www.branchdist.com

SHARP Fax Inkjet

UX-C70B	<i>R-016</i>	Sharp FO-1600, UX-B20/25/B700 fax	inkjet cart black	600	52.99	37.19	36.27
UX-C80B		Sharp UX-B800se	inkjet cart black	600	52.99	37.19	36.27

PrintWerks Thermal Fax Supplies, page 17

SMITH CORONA

21000	<i>GRC T309</i>	Smith Corona H series, per twinpack	correctable		11.60	7.45	6.99
■ 21025		Smith Corona H series	multistrike		17.00	11.60	10.50
21050	<i>GRC T366</i>	Smith Corona H series, per twinpack	lift off spool		7.60	4.67	4.38
21060	<i>GRC T369</i>	Smith Corona H series	lift-off cassette		6.10	4.12	3.86
22200		Smith Corona K series, per twinpack	correctable		10.10	7.96	7.46
22210		Smith Corona K series, per twinpack	correction tape		7.90	4.65	4.36



Can't find it? Check the PRODUCT INDEX for a complete list of "what-fits-what".
Still can't find it? Try our BRANCH-OUT program and let us find it for you - fast!